

ALUMAGUARD® Flexible Weather-Proofing Jacket



Alumaguard® weather-proofing cladding from **Polyguard** products is the original, flexible self-healing membrane used world-wide on exterior ductwork, refrigeration and chilled water piping, tanks, vessels and equipment.

- Proven: With millions of square feet sold over the last 12 years, **Alumaguard** has the track-record engineer's favor. It replaces labor-intensive rigid aluminum and fabric/mastic systems at like or less installed cost.
- True **Zero Perm** Performance
- Self-Healing: the rubberized bituminous membrane seals small cuts punctures; is UV stable; and expands and contracts with the underlying substrate.
- Excellent emissivity and sound attenuation properties.
- Available in bright white **Alumaguard® Cool Wrap** finish which meets California Title 24, CRRC and Energy Star requirements.

Description

Alumaguard is a composite membrane consisting of a multiply embossed UV-resistant aluminum foil/polymer laminate to which is applied a layer of rubberized asphalt specially formulated for use on insulated duct and piping applications. The rubberized asphalt acts as the substrate adhesive and provides the self-healing characteristics necessary to seal around punctures. Protecting the rubberized asphalt is an easily removed plastic release liner which gives **Alumaguard** its peel and stick functionality.

Uses

Alumaguard is designed to be used outdoors to weather-proof exterior insulated ductwork, piping or other insulated tanks, vessels and equipment. **Alumaguard** resists moisture, air and vapor intrusion.

Notes: Prior to the installation of Alumaguard®, ducts must be sealed in accordance with SMACNA HVAC Duct

Construction Standards Metal and Flexible, 3rd Edition (2005), Seal Class A.

Installation

All roof-top ductwork to which Alumaguard is to be applied must be designed with adequate slope (watershed) to prevent ponding water. Ponding water is defined as water that stays in place for greater than 24 hours.

Alumaguard should only be applied to faced fiberglass or faced closed-cell foam insulation board.

Applying Alumaguard to light density duct wrap is not recommended. Round or oval duct should be insulated with 3# or 6# pipe and tank wrap with appropriate facing.

Alumaguard is a "peel and stick" product which must be applied to a properly prepared substrate. In duct applications, **Alumaguard® Lite** must be used for the underside of the duct to eliminate the need for pinning. Complete installation instructions are available on our website, www.polyguardproducts.com.

Packaging

Alumaguard is available in 4", 24", and 35" x 50' rolls packaged 12, 2 and 1 to a carton respectively in an embossed Foil finish.

Limited Warranty

Polyguard Products warrants material to be free from leaks caused by defects in materials or manufacturing for a period of ten (10) years from the date of installation when material is applied according to installation instructions in effect at time of installation. Contact **Polyguard** for complete details on the Limited Warranty.



Limitations

Alumaguard® should be installed on a properly prepared, clean and dry substrate. **Alumaguard** must be protected from damaging chemicals including petroleum and/or coal tar solvents.

Alumaguard should not be adhered directly to commercial roofing membranes. For specific information regarding **Alumaguard** and commercial roofing, refer to Technical Bulletin, 2011-1.

Alumaguard should not be handled on the asphalt side during installation; handle edges with the release liner still attached, pull the release liner off as you press it onto the substrate.

Alumaguard should be stored in a clean dry area with boxes laid horizontally and not on end. Alumaguard has a recommended shelf life of 12 months.

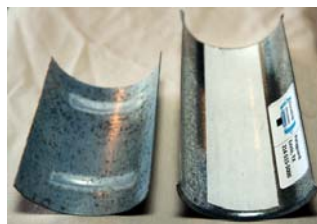
Note: Before installing Alumaguard®, please obtain a full set of our most current installation instructions on our website, or call Polyguard at 800-541-4994.

| Alumaguard ® Technical Properties and Testing | | |
|---|--------------------------|--------------------------|
| Membrane Property | Test Method | Results |
| Product Thickness | Micrometer | 55-60 mils |
| Product Weight | Scale | 0.3 lbs/sf |
| Water Vapor Transmission (grains/hr-ft ²) | ASTM E96-00 | 0.00 |
| Permeance (US perms) | ASTM E96-00 | 0.00 |
| Peel Adhesion (to primed steel) | ASTM D1000 | >12 lbs/in |
| Elongation at Break | ASTM D882 | 182% |
| Low Temperature Pliability | ASTM D146 | No Cracks@-15°F |
| Tensile Strength (Film only)(MD) (XD) | ASTM D882 | 43 lbs/in 51 lbs/in |
| Puncture Resistance (Film Only) | ASTM D774 | 150 PSI |
| Mold Resistance | ASTM C1338 | Pass |
| Upper Temperature Limit | LAB | 160°F |
| Emissivity | ASTM C1371 | .030 |
| Alumaguard ® Cool Wrap Properties and Test Results | Solar Reflectance | Thermal Emittance |
| Cool Roof Rating Council(CRRC) Initial | 0.86 | 0.82 |
| Cool Roof Rating Council(CRRC) 3 Year | Pending | Pending |
| Energy Star 3 Year | 0.84 | 0.78 |
| California Title 24 | Exceeds 0.75 | Exceeds 0.75 |

AlumaGlide™ gliding saddles are the perfect accompaniment for use with any dynamic piping system, two saddles; the top one adhered to the insulation jacketing, the bottom with a PTFE sheet on the inside of the saddle, and ribs to keep it in place on the pipe stand or hanger, allow for movement up to 4" of a pipe system, your support saddles move with the system! No more damaged jacketing or saddles falling out. See the **AlumaGlide**™ data sheet for more specific information.



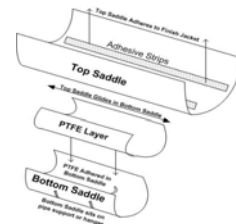
Standard Saddle



Two Piece Saddle



Stays in Hanger



Patented Glider System