

ALUMAGUARD® All-Weather (LT) Flexible Weather-Proofing Jacket

Alumaguard® All-Weather (LT) weather-proofing cladding from *Polyguard Products* is the only flexible insulation cladding available in the market which combines the self-healing characteristics of rubberized asphalt with the ease of application and cold weather performance of acrylic adhesive-based products.

- Proven: Uses the same outer layer and rubberized asphalt compound as the original *Alumaguard* membrane which has been used successfully in the market for 12 years as a lower cost alternative to standard metal and mastic/fab applications.
- Self-Healing: rubberized bituminous membrane seals small cuts and punctures; is UV stable.
- Acrylic adhesive allows installation down to 10°F.
- No pinning or activator required
- Excellent emissivity
- Can be used year round

Description

Alumaguard All-Weather (LT) is a composite membrane consisting of an embossed UV-resistant aluminum outer layer laminated to a multi-ply cross-laminated polyethylene film to which is applied a layer of rubberized asphalt specially formulated for use on insulated duct and piping applications. A metalized polyester film coated with a high quality low temperature acrylic adhesive is then applied to the rubberized asphalt. A heavy duty kraft release liner gives *Alumaguard All-Weather (LT)* its peel and stick functionality.

Uses

Alumaguard® All-Weather (LT) is designed to be used outdoors to weather-proof exterior insulated ductwork, piping or other insulated tanks, vessels and equipment. *Alumaguard LT (All-Weather)* resists moisture, air and vapor intrusion.

Notes: Prior to the installation of *Alumaguard All-Weather (LT)*, ducts must be sealed in accordance with SMACNA HVAC Duct Construction Standards Metal and Flexible, 3rd Edition (2005), Seal Class A.

Installation

All roof-top ductwork to which *Alumaguard All-Weather (LT)* is to be applied **must** be designed with adequate slope (watershed) to prevent ponding water. Ponding water is defined as water that stays in place for greater than 24 hours.

Alumaguard All-Weather should only be applied to faced fiberglass or faced closed-cell foam insulation board.



Houston, TX 2008

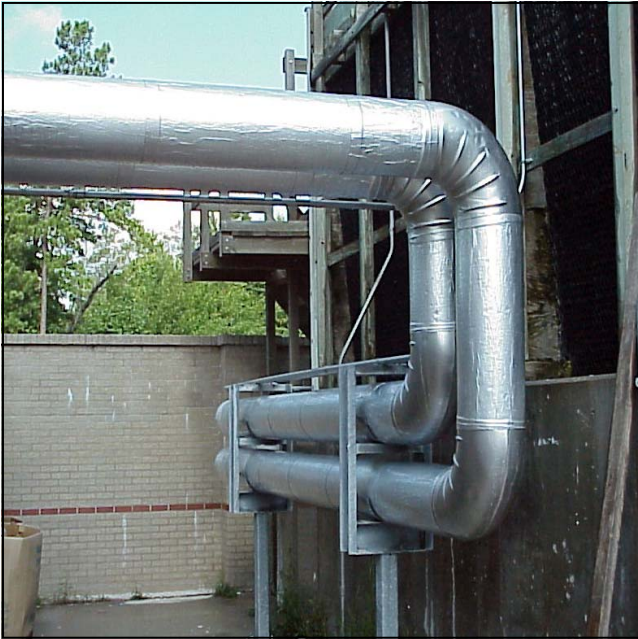
Alumaguard® All-Weather (LT) is a “peel and stick” product which must be applied to a properly prepared substrate. In duct applications, *Alumaguard All-Weather (LT)* can be used for the underside of the duct and does not require pinning. Complete installation instructions are available on our website, www.polyguardproducts.com.

Packaging

Alumaguard All-Weather (LT) is available in 4” x 50’ and 36” x 75’ rolls packaged 12 and 1 to a carton respectively in an embossed foil finish.

Limited Warranty

Polyguard Products warrants material to be free from leaks caused by defects in materials or manufacturing for a period of ten (10) years from the date of installation when material is applied according to installation instructions in effect at the time of installation. Contact *Polyguard* for complete details on the Limited Warranty.



Limitations

Alumaguard® All-Weather (LT) should be installed on a properly prepared, clean and dry substrate. *Alumaguard All-Weather (LT)* must be protected from damaging chemicals including petroleum and/or coal tar solvents.

Alumaguard All-Weather (LT) should not be adhered directly to commercial roofing membranes. For specific information regarding *Alumaguard All-Weather (LT)* and commercial roofing, refer to Technical Bulletin, 2011-1.

Alumaguard All-Weather (LT) should be stored in a clean dry area with boxes laid horizontally and not on end. The product has a recommended shelf life of 12 months.

Note: Before installing *Alumaguard® All-Weather (LT)*, please obtain a full set of our most current installation instructions on our website, or call *Polyguard* at 800-541-4994.

Alumaguard® All-Weather (LT) Technical Properties and Testing

Membrane Property	Test Method	Results
Total Product Thickness (w/o liner)	ASTM D1000	35 mils
Water Vapor Transmission (grains/hr-ft ²)	ASTM E96-00	.00
Permeance (US Perms)	ASTM E96-00	.00
Peel Adhesion (to primed steel)	ASTM D1000	>16 lbs/in
Elongation at Break	ASTM D882	400%
Low Temperature Pliability	ASTM D146(modified)	No Cracks@-15°F, -31°F
Tensile Strength (Film only)	ASTM D882(Method B)	5000 PSI
Puncture Resistance (Film Only)	ASTM E154	>40 Lbs
Fungus Resistance	ASTM G21-90	No Growth
Sound Transmission Coefficient	ASTM E 90-97	0.18
Upper Temperature Limit	LAB	150°F
Bond to Itself (2 hr UV Exposure) Lbs/1"	ASTM D1000	5.8
Bond to Itself (3 day UV Exposure) Lbs/1"	ASTM D1000	8.2
Peel Adhesion (overlap bond)@-15°F	ASTM D1000	5.8
Peel Adhesion (overlap bond)@-31.5°F	ASTM D1000	8.2
Emissivity	ASTM C1371	.030