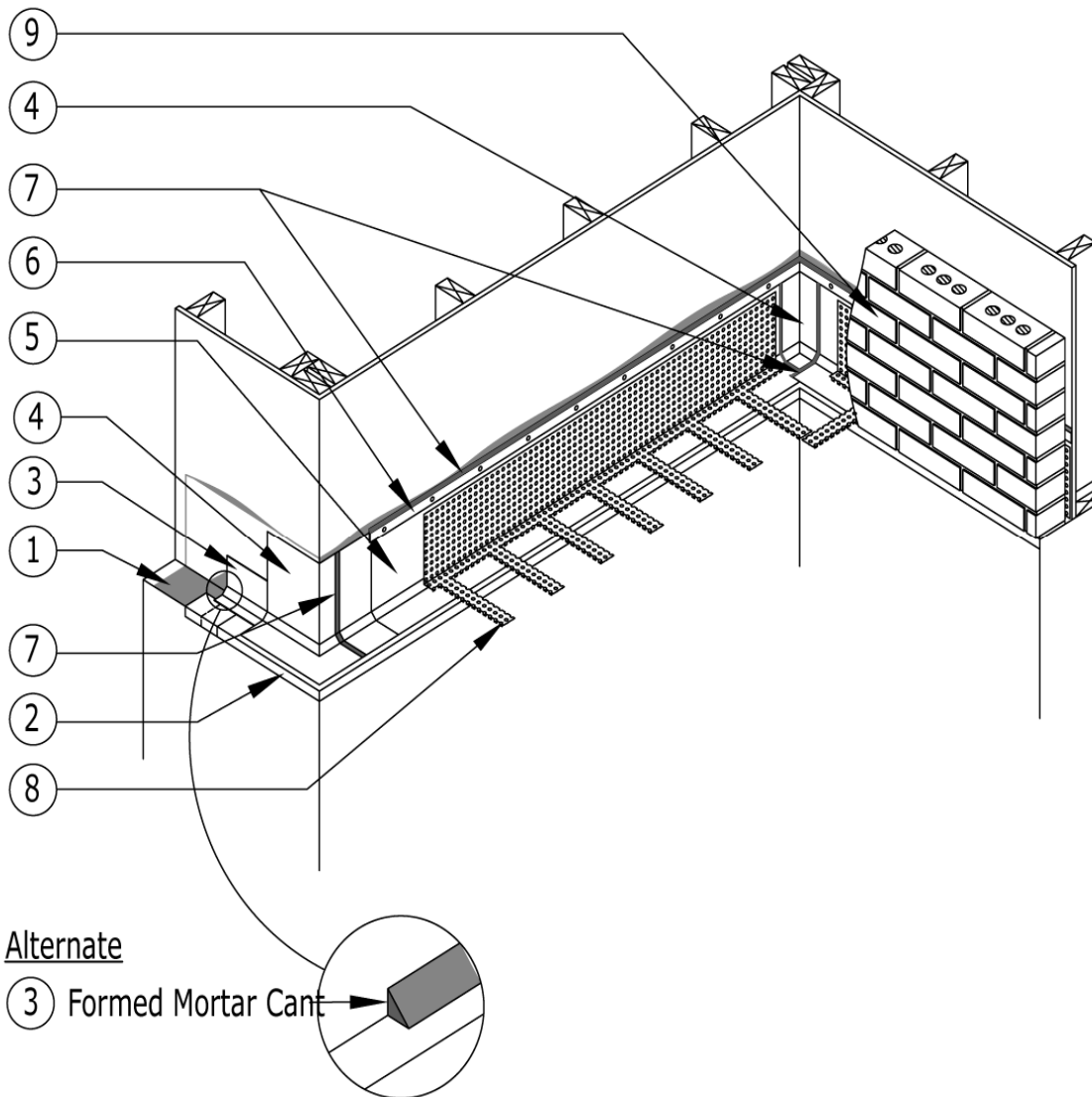


Section 1.e Overview of Masonry Cavity Wall Construction and Materials :**Figure 1.e.1 Installation Sequence of Cavity Wall Construction**

1. Surface preparation.
2. [Drip Edge and Fittings](#) on ledges 7-feet or more above a pedestrian traffic zone.
[1-inch Counter and Fittings](#) on ledges within a pedestrian traffic zone.
3. Polyguard [TWF Cant](#) or formed mortar cant.
4. Polyguard Preformed or Field Formed [TWF Inside](#) and [Outside Corner Flashing](#).
5. Polyguard [400 TWF](#) membrane.
6. Polyguard [Flared Termination Strips](#).
7. Polyguard [Detailing Sealant](#) or [650 Mastic](#).
8. Polyguard [Horizontal Weep](#).
9. Masonry, brick shown.