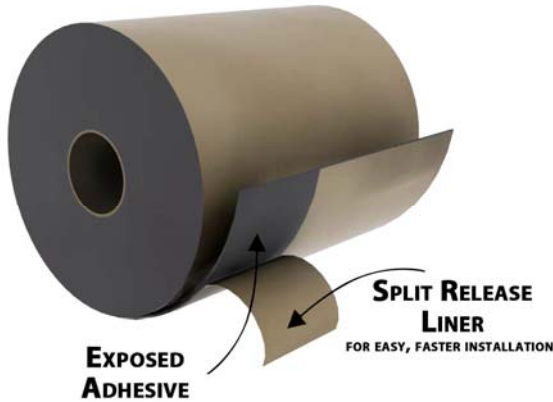


400 TWF

Polyguard 400 TWF, also known as 400, is modified asphalt bonded to a polyethylene sheet. The primary uses are for wall flashing, through wall flashing (**TWF**), joint flashing, and non-vapor permeable air barrier. The asphalt is protected with a release paper that is slit 3-inches in from an edge. The slit establishes two sections



of release paper that can be removed independently, thereby allowing the flashing to be placed and aligned on a wall without adhering the entire sheet until alignment is complete. This installation method promotes a smooth interface with the substrate, increases installer productivity and reduces waste. The split release paper is standard for sizes 6 through 24-inches.

1. Limitations

None when used for the design purpose.

2. Materials and Composition

Polyguard's proprietary asphalt compound bonded to a polyethylene sheet.

3. Physical Properties

Thickness:	40 mils
Puncture Resistance - Film (ASTM-D-781) Kg/CM	110
Puncture Resistance of Composite Membrane (ASTM-E-154) LBS	40 Min.
Tensile Strength of Composite Membrane (ASTM-D-412 Modified Die C)	750 PSI Min.
Tensile Strength of Film (ASTM-D-882)	5000 PSI Min.
Elongation-Ultimate Failure of Rubberized Asphalt (ASTM-D-412 Modified Die C)	400% Min.
Water Vapor Transmission	

(Permeance) (ASTM-E-96 Method B)
(Grains/Sq. Ft./Hr. in HG) 0.035 Max

Air Permeance of Building Materials
ASTM E 2178 0.007L/ (s-m2) @75 Pa [0.0014cfm/ft2@1.56 psf]

Air Permeance of an Assembly
ASTM E 2357 0.0008cfm/ft2@ 1.57 psf

Water Absorption (ASTM-D-570) .014%

Nail Sealability
ASTM D 1970 Pass

4. Chemical Resistance

Not chemically affected by metal, cement, or clay materials used in masonry wall construction.

5. Technical Data

Polyguard Products, Inc. provides design data and installation instructions to architects, engineers, specifiers, and contractors.

6. Installation

OVERVIEW NOTES:

Polyguard 400 membrane is designed for UV exposure of 30 days or less. In **TWF** applications, trim the forward edge 5/8-inch from either the face of the wall or from the forward bend in exposed metal drips or counters.

Polyguard 400 membrane requires support across gaps and openings greater than 1/8-inch. 90-degree intersections, i.e. between walls and ledges, should be modified to have a less severe angled transition from vertical to horizontal. Creation of an even and sloped support and drainage plane at transitions and gaps should be accomplished as follows:

- At wall to ledge intersections, form a cant surface using: mortar or **Polyguard LM95**; formed metal or plastic with hemmed, smooth, or soft edges or; a **Polyguard TWF Cant**.
- Across wall cavities and gaps greater than 1/8-inch between materials use: wall fastened formed metal or plastic with hemmed, smooth, or soft edges; wall fastened tapered/beveled edged rigid foam or; a **Polyguard TWF Cant**.

For best results, install row and end overlays with a minimum 2-inch overlap.

Draining flashing and **TWF** via dedicated weeps, closing discontinuous flashing ends with end dams, mechanically terminating and sealing the top edge of a flashing in cavity wall construction, and sealing the top edge of a flashing in non-cavity wall construction are essential and integral parts of fully functioning and long term performing flashing and **TWF**.

7. Best Practice Installation Steps:

1. Prepare the surfaces to receive the flashing.
2. Apply a coating of **Polyguard Liquid Adhesive**. If a substrate has been coated with **Poly Wall Air Lok Flex** or **Air Lok Flex VP** and the coating is cured, priming with a liquid adhesive is not necessary.
3. Per construction documents, install **Polyguard Drip Edge** along edges and ledges that are above pedestrian traffic areas, **Polyguard 1-inch Drip Counters** along edges and ledges in pedestrian traffic areas, and **Polyguard 1-1/2-inch Drip Counters** along roof to wall intersections.
4. Fig.1 Form a cant along the vertical to horizontal intersection. Use either **Polyguard LM-95**, or **Polyguard TWF Cants**, **TWF Cant** shown. See Fig. 2 for gap conditions.
5. Install **Polyguard 400** membrane.
6. Apply pressure over the face of the installed membrane with a hard surfaced rubber roller or similar blunt instrument.
7. Terminate the top edge of flashing as follows:

In cavity wall assemblies, install **Flared Termination Strips** along the top edge of the flashing, Fig. 1

In non-cavity wall assemblies, a top edge mechanical restraint is not required.
8. Apply **Polyguard Detailing Sealant, 650 Mastic, or Detail Sealant PW** (Detailing Sealant shown in Figs. 1 and 2) in and along the flare of termination strips, along the top edge of non-restrained flashing (not shown), and along end laps.
9. Install **Polyguard Horizontal Weeps** over the face of the flashing prior to installing the exterior finish. Where masonry will be dry set on a supporting plane; cut the weep extensions from the body of the **Horizontal Weep**, attach the trimmed weep body to the face of the flashing, and locate 3/16-inch tube weeps in the bottom of each masonry head joint with the cavity end of the tube friction fit between the bottom of the weep body and the flashing and the drainage end trimmed flush with the face of the wall.

8. Availability and Cost

Polyguard 400 is packaged in 75-foot rolls and available in widths of 3, 4, 6, 9, 12, 16, 18, 24, 36 and 48-inches. All sizes have Split Release Paper except 3, 4, 36 and 48-inch.

Information about a distributor near you is available by phone or e-mail.

9. Guarantee

Polyguard 400 TWF will meet published specifications at the time of delivery.

10. Technical Services

Polyguard Products, Inc. offers specialist advice to aid the architect, engineer, and contractor with the construction process.

P.O. Box 755
Ennis, TX 75120
PH: (214) 515-5000
FX: (972) 875-9425

www.polyguardproducts.com

www.poly-wall.com

This information is based on our best knowledge,
but, POLYGUARD cannot guarantee the results to be obtained.

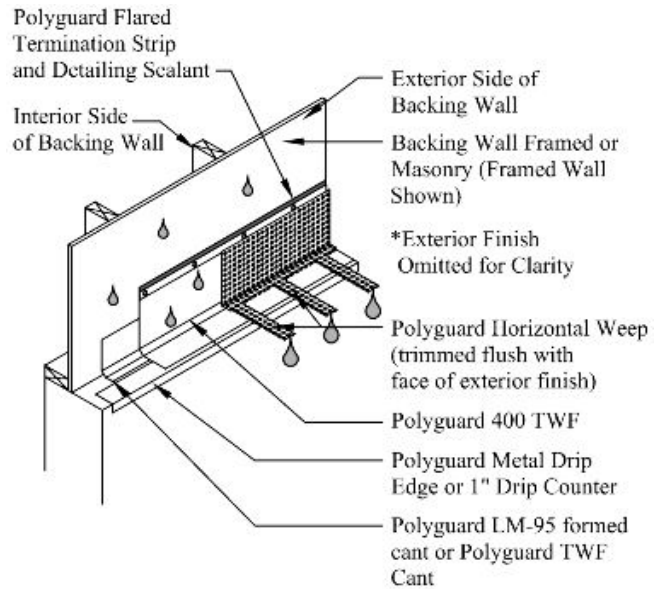


Fig. 1

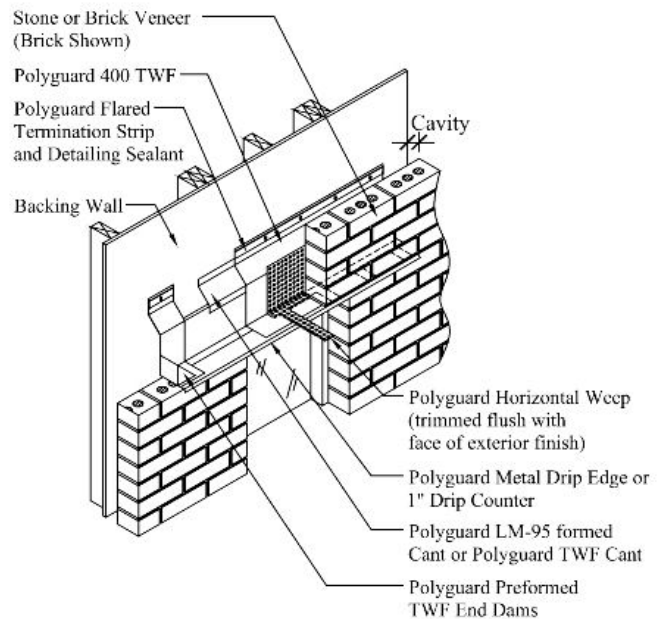


Fig. 2