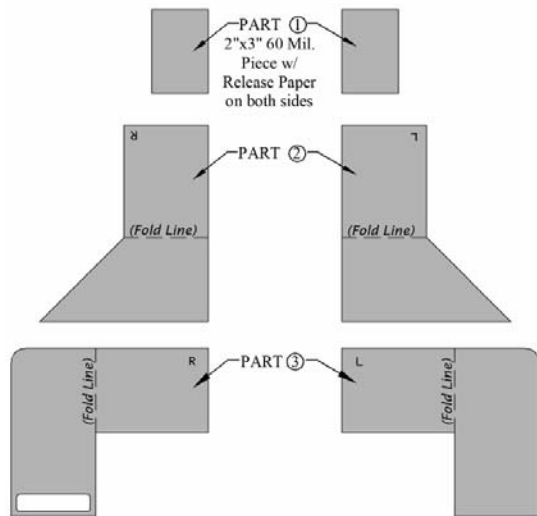


Installation Instructions

CORNER FLASHING KITS

Polyguard Corner Flashing Kits (CFK's) are designed for use with **Polyguard Flexible Pan Flashing** and other adhesive backed membrane flashings. They protect and seal corners at the intersections of a sill/threshold, jamb, and sheathing members of a rough opening.



Each kit consists of 6 parts, three parts for a left corner and three parts for a right corner.

Part 1, is a 60mil double-sided tape (**606-Tape**). It is protected on both adhesive sides with disposable release paper. The part is furnished in either 2-inch by 3-inch pieces or in a 2-inch by 6-inch strip that is perforated for separation into 2-inch by 3-inch pieces.

Parts 2 & 3 are polyethylene bonded to a proprietary and adhesive waterproofing compound. They function to hold Part 1 in place and protect it during the window, door, or fixture installation.

INSTALLATION

NOTES: Install **Polyguard Flexible Pan Flashing** or other adhesive backed flashing and then install a **CFK** over that flashing at the corners. The illustrations depict a **Flexible Pan Flashing**. Adapt the illustrations for applications using other **Polyguard** flashings.

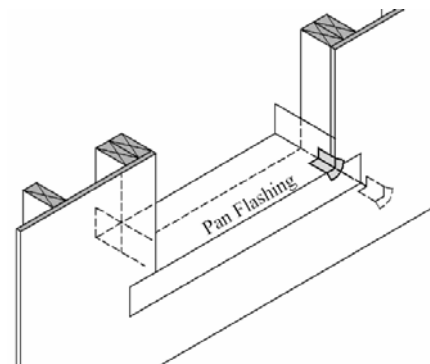
Storage: Protect the material from heat, crushing, moisture, mud, and construction dirt. Keep the product in the package until it will be used. For best results, the material should be stored between 50 to 75 degrees F prior to application.

Preparation: Prepare the surfaces where the **CFK** components will be attached so that, they are smooth relative to the construction surfaces, clean, and dry.

Safety: Material Safety Data Sheets are available upon by phone, e-mail, or on the web.

Product Attachment: Test for adhesion. If the membrane can be separated from the substrate without deforming the flashing, a liquid adhesive will be needed. In that event, apply a liquid adhesive, at a rate of 250-300 sq. ft. per gallon, to surfaces that will receive the flashing. Use a liquid adhesive that is compatible with the substrates. Use solvent based **Polyguard 650LT**, (in California, **Polyguard California Sealant**) for substrates that are compatible with solvent based material and use water based **Polyguard Shur-Tac** for substrates that are not compatible with solvent based materials.

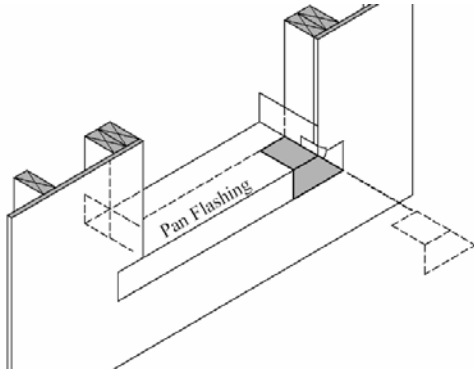
Installing a Corner Flashing Kit



1. Install **Flexible Pan Flashing** over the sill and jamb area as shown. (The interior leg of straight sheet flashing would typically align with the interior edge of the framing.)
2. Install Part 1, centered lengthwise at the corner and widthwise to the framing, onto a rough opening corner.

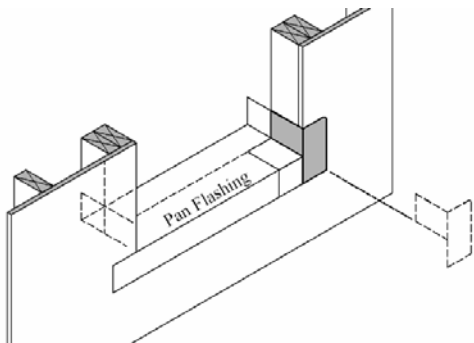
P.O. Box 755
Ennis, TX 75120
PH: (214) 515-5000
FX: (972) 875-9425

This information is based on our best knowledge, but POLYGUARD cannot guarantee the results to be obtained.



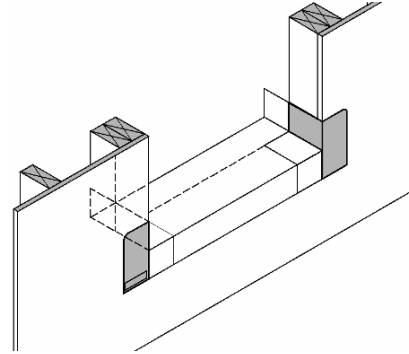
3. Install Parts 2 & 3 over Part 1, in the following sequence:

Shape and adhere Part 2, the triangulated piece, onto the sill/threshold and backing wall as shown.



Shape and adhere Part 3, the non-triangulated piece, onto the jamb and backing wall as shown.

4. Apply pressure to the surface of the flashing with a rubber roller.



5. Repeat Steps 2 through 4 for the other corner.
6. Protect the installed flashing from damage until a window, door, or fixture is installed.

Polyguard Products, Inc.
PO Box 755
Ennis, TX 75120-0755
Phone: 214-515-5000
Fax: 972-875-9425
Tech Support: 513-404-0977
www.polyguardproducts.com.

© Polyguard Products 2010

X:/Lit/Arch/Corner Flashing Kits Installation Instructions.doc R 6-24-10