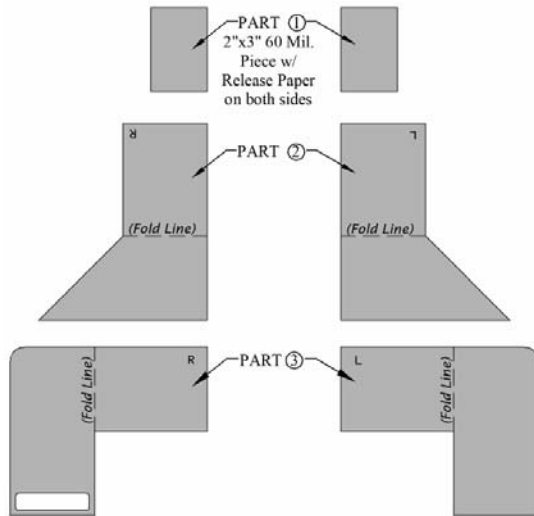


CORNER FLASHING KITS

1. DESCRIPTION

Polyguard Corner Flashing Kits (CFK's) are designed for use with **Polyguard Flexible Pan Flashing** and other adhesive backed membrane flashings. They protect and seal corners at the intersections of a sill/threshold, jamb, and sheathing members of a rough opening.



2. LIMITATIONS

None when used for the design purpose.

3. MATERIALS AND COMPOSITION

Part 1, is a 60mil double sided tape (**606-Tape**). It is protected on both adhesive sides with disposable release paper. The part is furnished in either 2-inch by 3-inch pieces or in a 2-inch by 6-inch strip that is perforated for separation into 2-inch by 3-inch pieces.

Parts 2 & 3 are polyethylene bonded to a proprietary and adhesive waterproofing compound. They function to hold Part 1 in place and protect it during the window, door, or fixture installation.

4. PHYSICAL PROPERTIES

Thickness:	
Primary waterproofing piece	60 mils
Protective cover set	25 mils/pc.
Moisture Absorption % (ASTM D570-42)	.2

5. CHEMICAL RESISTANCE

Asphalt products are not compatible in direct contact with: uncured urethane; cured or uncured silicone.

6. TECHNICAL DATA

Polyguard Products, Inc. provides design data and installation instructions to architects, engineers, specifiers, and contractors.

7. INSTALLATION

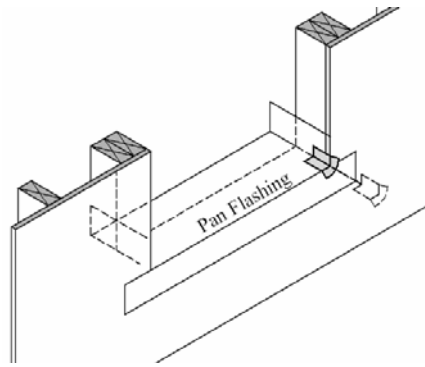
Storage: Protect the material from heat, crushing, moisture, mud, and construction dirt. Keep the product in the package until it will be used. For best results, the material should be stored between 50 to 75 degrees F prior to application.

Preparation: Prepare the surfaces where the **CFK** components will be attached so that, they are smooth relative to the construction surface, clean and dry.

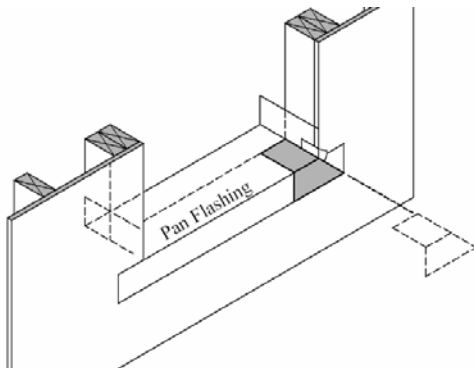
Safety: Material Safety Data Sheets are available upon request by phone, e-mail, or on the web.

Product Attachment: Test for adhesion. If the membrane can be separated from the substrate without deforming the flashing, a liquid adhesive will be needed. In that event, apply a liquid adhesive, at a rate of 250-300 sq. ft. per gallon, to the surfaces that will receive the flashing. Use a liquid adhesive that is compatible with the substrates. Use solvent based **Polyguard 650LT**, (in California, **Polyguard California Sealant**) for substrates that are compatible with solvent based material and use water based **Polyguard Shur-Tac** for substrates that are not compatible with solvent based materials.

Installing a Corner Flashing Kit

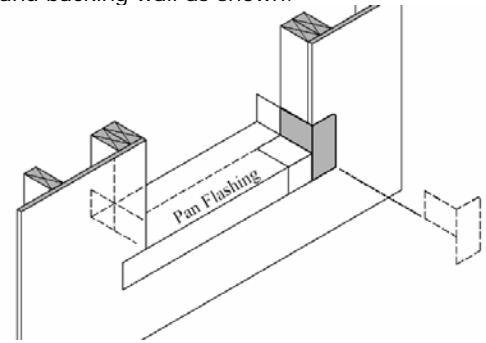


1. Install a flashing over the sill and jamb area, **Flexible Pan Flashing** shown.
2. Install Part 1, centered lengthwise at the corner and widthwise to the framing, onto a rough opening corner.



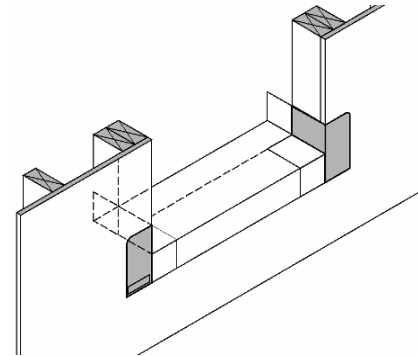
3. Install Parts 2 & 3 over Part 1, in the following sequence:

Shape and adhere Part 2, the triangulated piece, onto the sill/threshold and backing wall as shown.



Shape and adhere Part 3, the non-triangulated piece, onto the jamb and backing wall as shown.

4. Apply pressure to the surface of the flashing with a rubber roller.



5. Repeat Steps 2 through 4 for the other corner.
6. Protect the installed flashing until a window, door, or fixture is installed.

8. AVAILABILITY AND COST

Polyguard Corner Flashing Kits are packaged 50 kits per box, enough for 50 sets of corners. Eight kits are included with each roll of **Polyguard Flexible Pan Flashing**.

Information about a distributor near you is available by phone or e-mail.

9. GUARANTEE

Polyguard Corner Flashing Kits will meet published specifications at the time of delivery.

10. TECHNICAL SERVICES

Polyguard Products, Inc. offers specialist advice to aid the architect, engineer, and contractor with the construction process.

© Polyguard Products 2011

X:/Lit/Arch/2011/Corner Flashing Kits R. 2-17-11