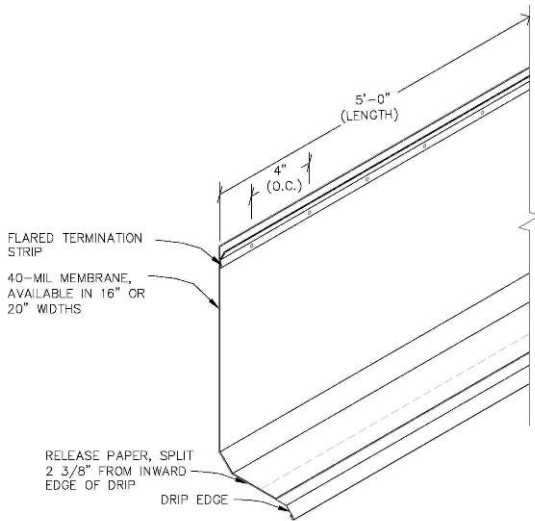


Flash 'N Weep®

Patent 6,964,136

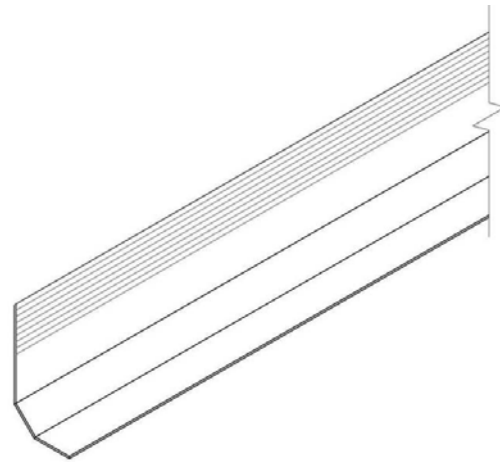
1. DESCRIPTION



Shown Formed to a Ledge Application

Flash 'N Weep is a fully adhered Through Wall Flashing System. It is pre-assembled in 5-foot sections that include a stainless steel drip edge/counter, 40 mil membrane, and flared termination. The sections are packaged with accessories needed for installation. Those accessories are: **373 Spray Adhesive**, **TWF Cants**, **4-inch Joint Covers**, **Horizontal Weeps**, **Termination Fasteners**, **Detailing Sealant**, Sealant Spatula, and Membrane Squeegee. **Pre-formed End Dams** and **Corner Boots** are sold separately.

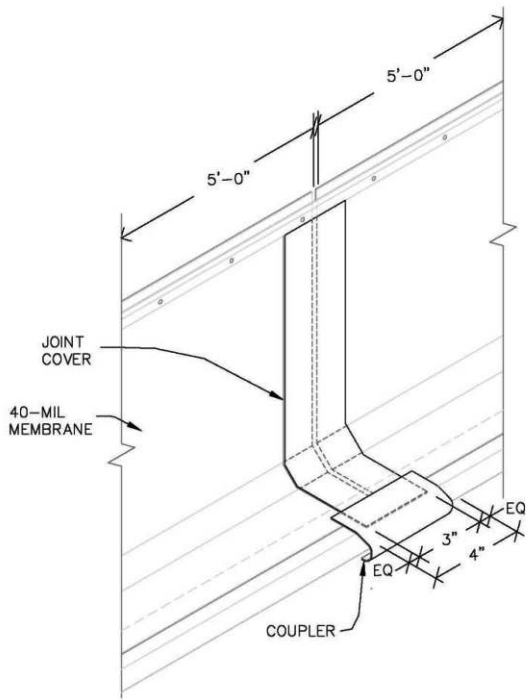
Spray Adhesive is used over raw substrates to improve bond of the membrane.



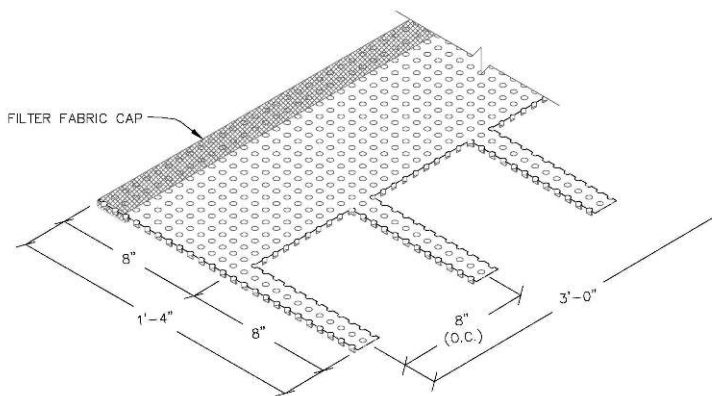
Shown Bent for a Ledge Application

TWF Cants, *Patent Pending*, address several conditions that compromise the effectiveness of membrane flashings. Those conditions are found:

- At the base of a wall intersection with a ledge: The **TWF Cant** establishes a positive pitch away from the wall; softens an undesirable 90 degree bend at the intersection; provides full support across the transition and; minimizes undesirable fish mouths at and along joints.
- Across cavities, i.e. above roof lines: The **TWF Cant** establishes a flashing support with a positive pitch away from the wall.
- At gaps between backing walls and loose laid angle steel and shelf angles. **TWF Cants** establish a flashing support with a positive pitch away from the wall.
- At the end of loose laid angle steel in masonry veneer. **TWF Cants** establish a flashing support in the area between the end of the steel and the masonry head joint, where an end dam will be embedded.



Joint Covers seal the joint between flashing sections and address a common problem caused by sealing overlapped metal drip sections with a sealant. Most of the sealants used for this purpose are not compatible with the membrane asphaltic compounds. The **Joint Covers** make a waterproof joint seal by covering separated metal drip sections with 40 mil membrane that has a top mounted open hemmed metal coupler. The coupler presents a finished metal appearance for the exposed edge of the pre-assembled sections. Sealing a joint in this way addresses the material compatibility issue, metal thermal movement issues, and waterproofing membrane end joints.

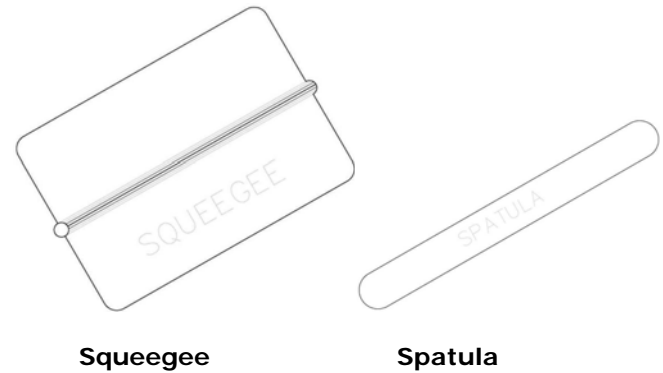


Horizontal Weeps, Patent 6,964,136, are a combination drainage weep and vent protected from clogging by mortar droppings. They are made to lie over the vertical and horizontal planes of flashing with the body of the weep against the vertical leg and the weep extensions against the horizontal leg. Situated this way, the weep extensions will be embedded in and by the exterior finish. This

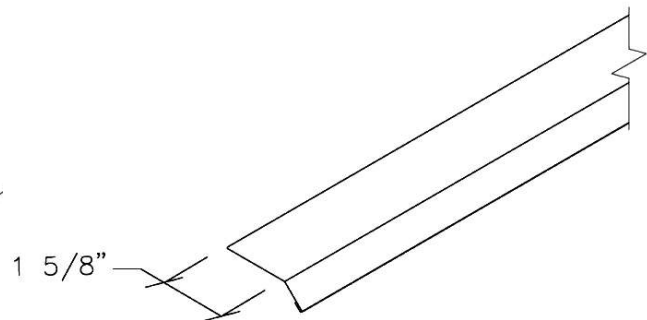
orientation and position in a wall assembly places the weep in the most effective position for draining water. Weep extensions are spaced at 8-inches and thereby provide a uniform and efficient way to drain a wall assembly. The net open area per lineal foot of the weeps is not less than 30% greater than open head joint weeps, spaced at 32-inches, in a masonry wall. The consistency of the weep extension dimension and spacing is useful for rain screen wall pressure management calculations.

Termination Fasteners are used to attach the **Flared Termination Strip** to the backing wall. When ordering, specify the length and type fastener needed to meet the fastening criteria.

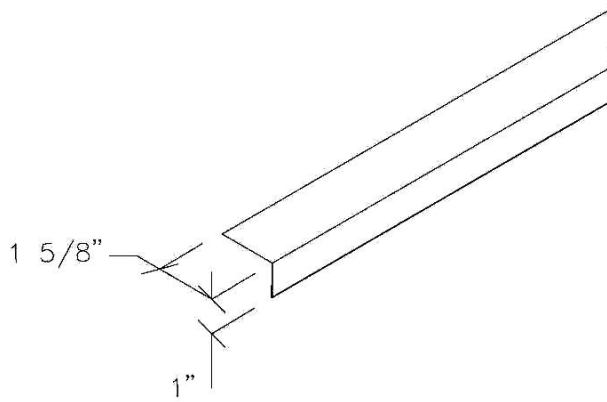
Detailing Sealant is used to seal; along the top edge, end joints, and over fastener heads in the **Flared Termination** and to seal the edges of the Joint Cover membrane.



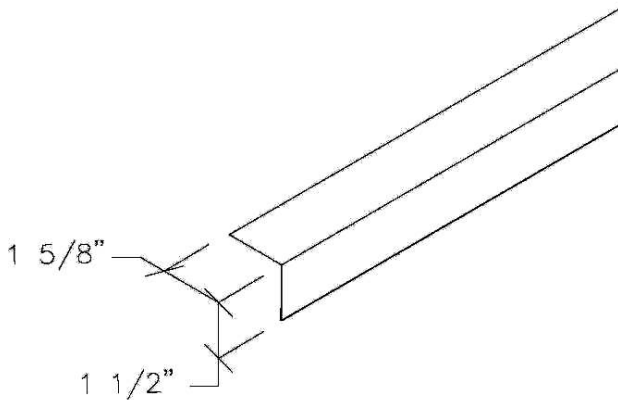
Sealant Spatula and Membrane Squeegee are package for the convenience of the installer and to facilitate compliance with the installation instructions. Specify type of metal, [304] [316] 28 gauge Stainless Steel or 12 oz. Copper, when ordering the following:



Drip Edges in areas that do not have pedestrian traffic;



1-inch Counters in areas that have pedestrian traffic and;



1-1/2-inch Counters at wall to roof intersections.

2. LIMITATIONS

There are no limitations when these products are used for their design purpose and in accordance with their installation instructions.

3. MATERIALS AND COMPOSITION

Refer to the data sheets for each of the components.

4. PHYSICAL PROPERTIES

Refer to the data sheets for each of the components.

5. CHEMICAL RESISTANCE

The flashing membrane is not compatible in direct contact with: uncured urethane; cured or uncured silicone.

6. TECHNICAL DATA

Polyguard Products provides design data and installation instructions to architects, engineers, specifiers, and contractors.

7. INSTALLATION

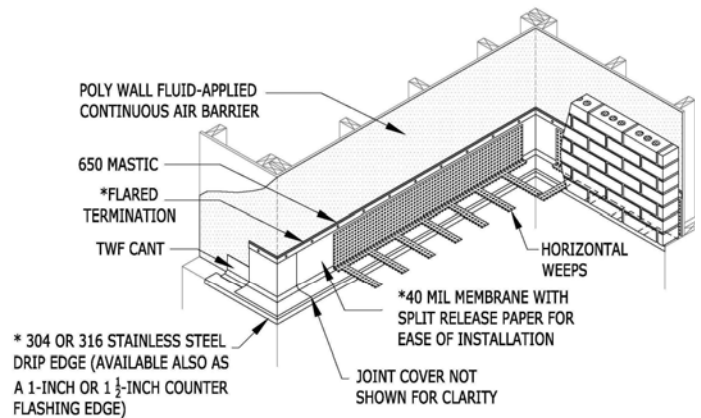
Storage: Protect the materials from heat, crushing, moisture, mud and construction dirt. Keep the product in the package until it will be used.

Preparation: Prepare the surfaces where the flashing will be attached so that, they are smooth relative to the construction surface, clean and dry.

Product Attachment: Use a clean rag and a 15% solution of Isopropyl Alcohol and water to clean Poly Wall air barrier coating surfaces that will be covered by the flashing. When the backing wall has not been covered by a Poly Wall air barrier product, apply a coating of Spray Adhesive to the areas that will be covered by the flashing.

Safety: Material safety Data Sheets are available upon by phone, e-mail, or on the web.

Installation:



Begin placement of the flashing by covering inside and outside corners with **Flash 'N Weep® Preformed Corner Boots**. (*Preformed Corner Boots* sold separately).

Where the backing wall is frame construction, mark the location of the studs on the face of the wall. Trim the end of a starting flashing section so that the holes in the **Flared Termination Strip** will align with the framing studs. Place 5-foot sections with the ends separated by 1/4-inch.

When the **Flared Termination** fastening holes are not able to be aligned with the framing studs, drill fastening holes after the flashing is adhered.

Remove the 2-inch wide section of release paper near and along the drip; place and position the section onto the substrate with the bend in the drip aligned at and along the forward edge of the substrate and; adhere the 2-inch exposed area to the substrate.

Using the squeegee provided, apply even pressure over and across the face of the flashing and in an upward direction as the remaining release paper is peeled away 2 to 3-inches at a time.

After the 5-foot sections are installed, install the **Joint Covers**. Remove the 3-inch section of release paper from the flashing, center the **Joint Cover** over the seam, and hook the open hem onto the closed hem of the installed sections. Rotate the **Joint Cover** metal into a horizontal position. Using the squeegee provided, apply even pressure over the face of the **Joint Cover** flashing as the remaining release paper is peeled away in an upward direction 2 to 3-inches at a time.

Apply a bead of **Detailing Sealant**:

- Into and along the receiving well of the **Flared Termination** and shaped with the Spatula to form a positive slope away from the backing wall.
- Over the fastener heads and tooled to an even coverage.
- Along the edges of the **Joint Cover** membrane and tooled to a flat coverage approximately 1/8-inches thick and 1/2-inch onto each side of the joint.

Install **Horizontal Weep** Sections across the flashed area with the bottom of the cups against the flashing, with the bottom edge of the **Horizontal Weep** body at and along the forward bend in the **TWF Cant**, and with the weep extensions extending across and along the horizontal plane to beyond the edge of the drip. Attach **Horizontal Weep** Sections to the face of the flashing with Quick Grip spray adhesive (sold separately) or alternately to the framing with fasteners at an approximate 16-inch spacing. When fasteners are used, cover the head and immediate perimeter of the fastener with **Detailing Sealant**.

Install the exterior finish.

Trim the weep extensions flush with the face of the exterior finish after it has hardened.

8. AVAILABILTY AND COST

Flash 'N Weep® is packaged in boxes covering 75-lineal feet.

Preformed End Dams and **Corner Boots** are sold separately.

Information about a distributor near you is available by phone or e-mail.

9. GUARANTEE

Flash 'N Weep® will meet published specifications at the time of delivery.

10. TECHNICAL SERVICES

Polyguard Products, Inc. offers specialist advice to aid the architect, engineer, and contractor with the management of moisture and the construction process.

©Polyguard Products, Inc. 2011

X:/Lit/Arch/2011/Flash N Weep.doc R 8-25-11