



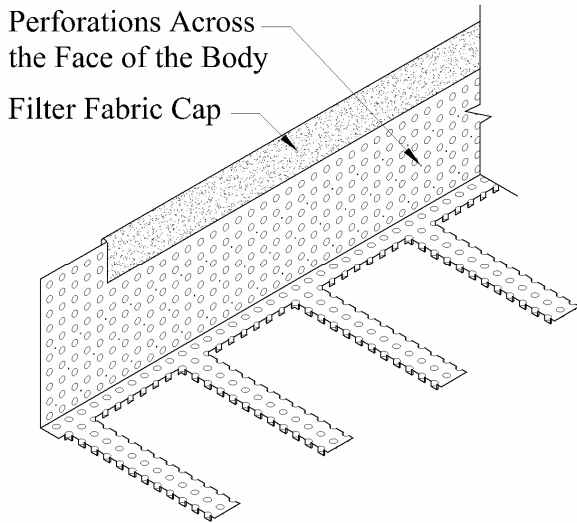
HORIZONTAL WEEP

Patent 6,964,136

1. DESCRIPTION

The **Horizontal Weep (HW)** is a dimple board designed for draining **Through Wall Flashing (TWF)** and venting wall assembly spaces on the exterior side of a backing wall.

A filter fabric cap protects the dimpled area from blockage from falling mortar and other construction debris. The dimpled area is designed for the drainage of water and venting of the wall assembly. Mortar or other exterior finish materials that accumulate in the space between the face of the main body and the back of an exterior finish, will transfer accumulating moisture to the dimpled side of the board through perforations across the face of the main body.

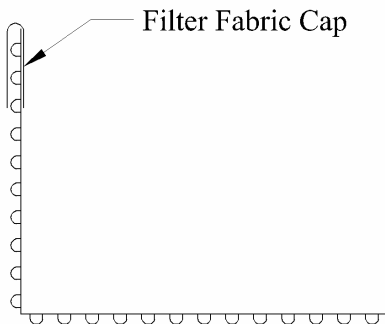


Shown bent for a 1-inch cavity application

The body of the board is flexible enough to be bent in 1/2 or 3/4-inch increments for positioning of the forward edge along the backside of the exterior finish.

The weep extensions are 8-inches long and designed to be trimmed flush with the face of the exterior finish after the finish has been installed.

The different bending points in the main body, combined with the length of the weep extensions, address a multitude of exterior finish depth and cavity dimension combinations. One standard size **Horizontal Weep** can be used for any combination of exterior finishes up to 7-1/2-inches thick with any cavity dimension up to 6-inches deep.



End View

The horizontal orientation of the weeps combined with the spacing between each weep reduces the likelihood of pooling of water at a low point across a flashing.

The net open area of the **HW** at the face of the exterior finish is .518 square inches per lineal foot. In a masonry comparison, this is nearly a 60% greater opening area than a typical head joint opening of a 3/8" x 2-1/4" spaced at 33-inches. The net open area of that opening is .3068 square inches per lineal foot. Furthermore, if that opening would include a head joint covering device, the net area would be reduced even more. The **HW** is designed to drain flashing and vent walls covered by field-constructed exterior finishes.

P.O. Box 755
Ennis, TX 75120
PH: (214) 515-5000
FX: (972) 875-9425

This information is based on our best knowledge, but POLYGUARD cannot guarantee the results to be obtained.



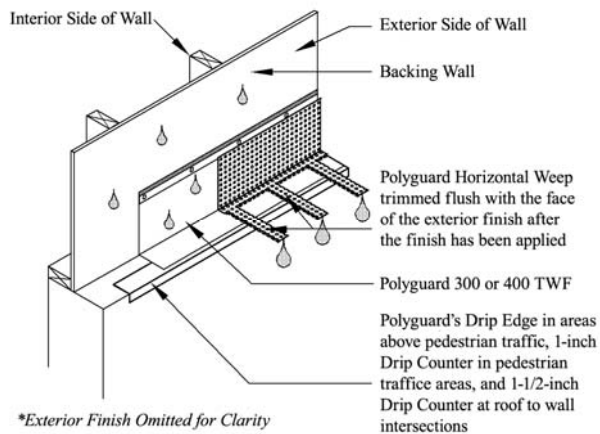


Fig. 1

In the masonry ledge application depicted in Fig. 1, the dimples provide spaces that receive water from and along a protected top edge and through perforations in and along the face of the weep body. Once in the dimpled area, water flows freely to the face of the exterior finish and air moves to pressure equilibrium.

2. LIMITATIONS

None when used for the design purpose.

3. MATERIALS AND COMPOSITION

A formed polystyrene sheet and a non-woven filter fabric.

4. PHYSICAL PROPERTIES

Polystyrene Sheet

Thickness ¼-inch

Non-Woven filter fabric

4 oz.

5. CHEMICAL RESISTANCE

Not reactive to common building materials.

6. TECHNICAL DATA

Polyguard Products, Inc. provides design data and installation instructions to architects, engineers, specifiers, and contractors.

7. INSTALLATION:

Storage: Protect the materials from heat, crushing, moisture, mud, and construction dirt.

Keep the product in the package until it will be used.

Safety: Material Safety Data Sheets are available upon request by phone, e-mail, or on the web.

Sequential Installation Instructions

Orient the bottom of the cups (dimples) to interface with the face of the flashing.

Shape the main body over the face of the flashing so that the lower edge will align along where the back of the exterior finish will be and with the ends of the weeps extending beyond where the face of the exterior finish will be.

Fasten with cap nails or cap screws embedded into the framing.

Install the exterior finish.

Trim the weep extensions flush with the face of exterior finish after the finish has been installed.

8. AVAILABILITY AND COST:

Packaged 64 pieces, 192 lineal feet, per package.

Information about a distributor near you is available upon request by phone or e-mail.

9. GUARANTEE:

The **Polyguard Horizontal Weep** will meet published specifications at the time of delivery.

10. TECHNICAL SERVICES:

Polyguard Products, Inc. offers specialist advice to aid the architect, engineer, and contractor with the management of moisture and air in exterior wall assemblies.

© Polyguard Products 2010

X:/Lit/Arch/DataSheets/2010/Horizontal Weep.doc R 12-16-10