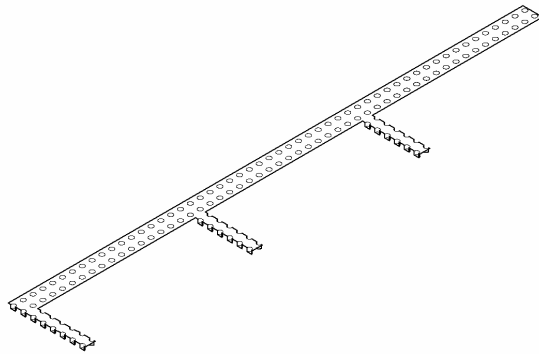


## PAN WEEP

### 1. DESCRIPTION

The **Pan Weep (PW)** is a cusped (dimple) board designed for draining sills and thresholds in flashed rough openings for non-flanged windows, doors, and fixtures. Venting said spaces is also achieved through the same open area thereby fostering a dry surrounding environment through air movement.



Isometric View

The continuous 3-foot body is 1-3/8-inches wide and the weep extensions are 3/4-inch wide and 5-inches long.

The weeps are spaced at 11-3/4-inches. This spacing reduces the likelihood of pooling of water at a low point across a flashing.

### 2. LIMITATIONS

None when used for the design purpose.

### 3. MATERIALS AND COMPOSITION

A formed polystyrene sheet and a polypropylene filter fabric.

### 4. PHYSICAL PROPERTIES

**Polystyrene Sheet**  
Thickness 1/4-inch

### 5. CHEMICAL RESISTANCE

Not reactive to common building materials.

### 6. TECHNICAL DATA

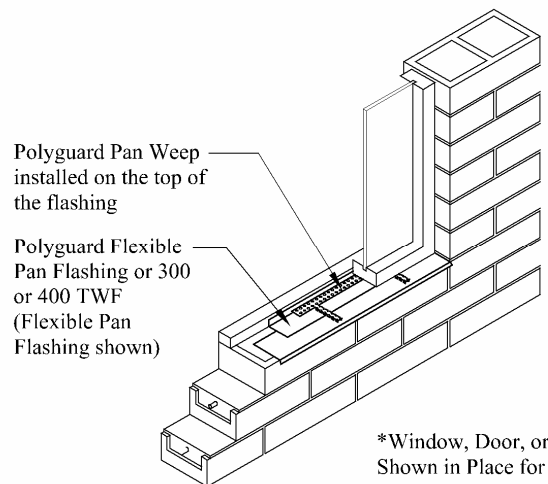
*Polyguard Products, Inc.* provides design data and installation instructions to architects, engineers, specifiers, and contractors.

### 7. INSTALLATION:

**Storage:** Protect the material from heat, crushing, moisture, mud, and construction dirt. Keep the product in the package until it will be used.

**Safety:** Material Safety Data Sheets are available upon request by phone, e-mail, or on the web.

#### Installation Instructions



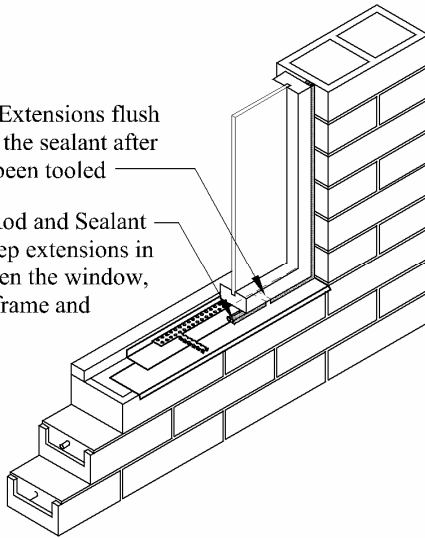
\*Window, Door, or Fixture  
Shown in Place for Context

Place the **Pan Weep** dimple down over a flashed sill or threshold with the interior edge located to accommodate later placement of a backer rod and sealant. Omit placement of the **Pan Weep** under shims.

Install the exterior finish.

Trim the Weep Extensions flush with the face of the sealant after the sealant has been tooled

Install Backer Rod and Sealant between the weep extensions in the space between the window, door or fixture frame and the drip edge



Trim the weep extensions flush with the face of sealant after the sealant has been tooled.

#### 8. AVAILABILITY AND COST:

Packaged 64 pieces, 192 lineal feet, per package.

Information about a distributor near you is available upon request by phone or e-mail.

#### 9. GUARANTEE:

The *Polyguard Horizontal Weep* will meet published specifications at the time of delivery.

#### 10. TECHNICAL SERVICES:

*Polyguard Products, Inc.* offers specialist advice to aid the architect, engineer, and contractor with the management of moisture and air in exterior wall assemblies.

© Polyguard Products 2010

X:/Lit/Arch/2010/Pan Weep.doc R 2-19-10