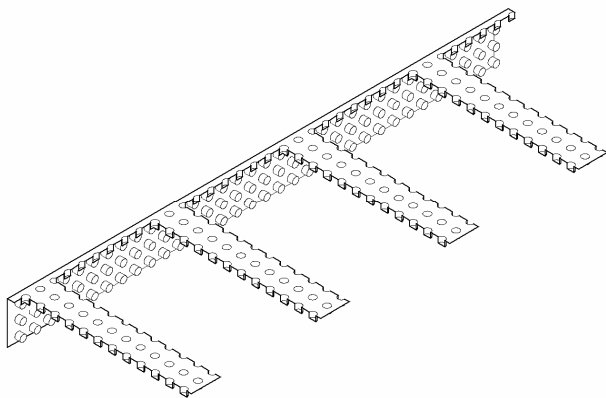


Installation Instructions

RAIN SCREEN TOP VENT

Polyguard Rain Screen Top Vent (Top Vent) is a ¼-inch dimple board designed for venting the cavity of a **Polyguard Type I or Type II Rain Screen** and / or a pressure equalized rain screen. A filter fabric sock covers the length of each vent extension. The vent extensions are 8-inches long and designed to be trimmed flush with the face of the exterior finish after the finish has been installed. The net open area of a trimmed **Top Vent** at the face of the exterior finish is .518 square inches per lineal foot.



Vent Extension Filter Fabric Socks Not Shown for Clarity

INSTALLATION

Storage: Protect the material from heat, crushing, moisture, mud, and construction dirt. Keep the product in the package until it will be used.

Product Placement and Alignment:

Place the flat side of the **Top Vent** against a backing wall.

When used in conjunction with **Type I Rain Screens**, align the dimples in the Top Vent with the dimples in the **Type I Rain Screen**.

When used in conjunction with a **Type II Rain Screen**, install the top edge of the **Type II Rain Screen** along the bottom edge of the **Top Vent**. Then cover the dimples of the **Top Vent** and abutting face of the **Type II Rain Screen** with

Polyguard 6-inch Vinyl Tape. Shape the vent extensions for embedment in the exterior finish.

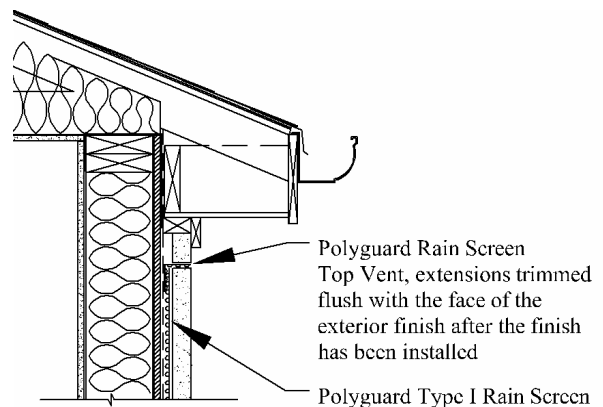
Product Attachment:

Attach **Top Vents** to framing members of a sheathed wall or head joints of a masonry backup wall using fasteners suitable for the substrate.

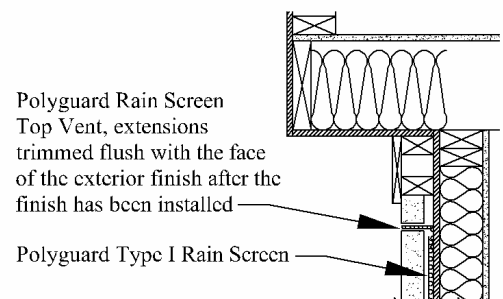
Installation Instructions:

Install **Polyguard Rain Screen Top Vents** when a direct connection between a cavity space and an unconditioned and vented space is not possible, i.e. under windows, doors, or trim boards and under sills in a **Type II** application.

Type I Rain Screen Applications:



Venting a Cavity Along Closed Eaves.

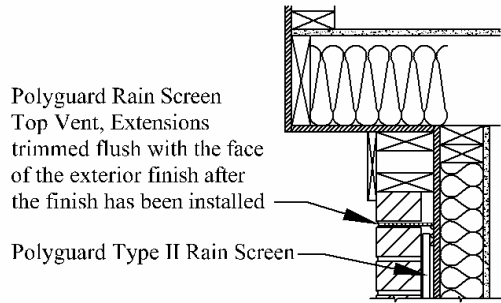


Venting a Cavity Along a Cantilever.

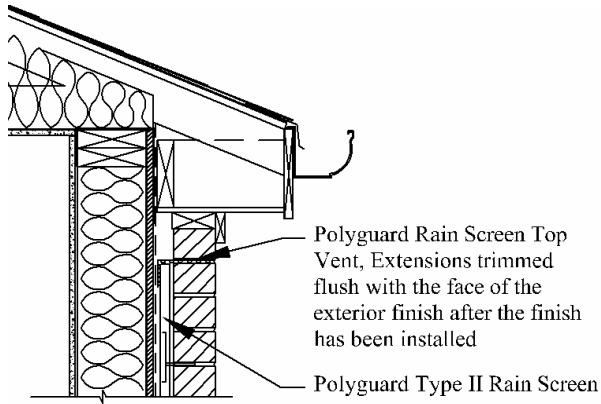
P.O. Box 755
Ennis, TX 75120
PH: (214) 515-5000
FX: (972) 875-9425

This information is based on our best knowledge, but POLYGUARD cannot guarantee the results to be obtained.

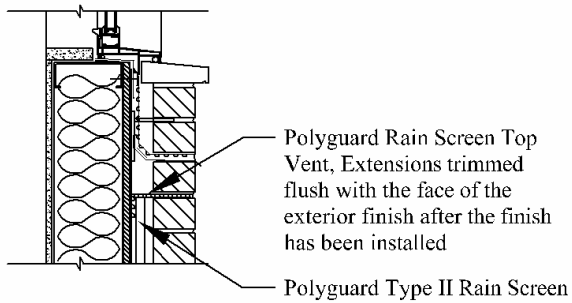
Type II Rain Screen Applications
(Masonry Veneer):



Venting a Cavity Along Cantilever.



Venting a Cavity Along a Closed Eaves.



Venting a Cavity Along a Masonry Sill.