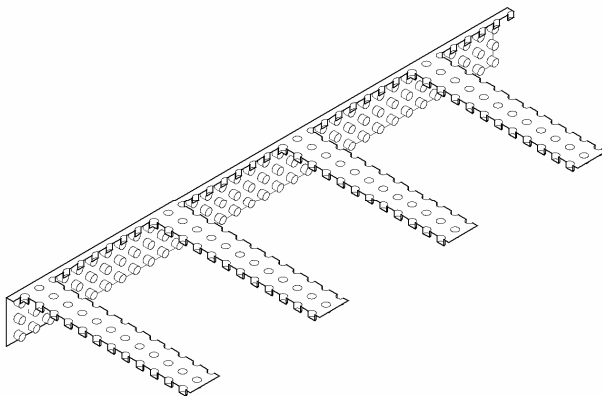


RAIN SCREEN TOP VENT

1. DESCRIPTION

Polyguard Rain Screen Top Vent (Top Vent) is a ¼-inch dimple board designed for venting the cavity of a **Polyguard Type I or Type II Rain Screen** and / or a pressure equalized rain screen. A filter fabric sock covers the length of each vent extension. The vent extensions are 8-inches long and designed to be trimmed flush with the face of the exterior finish after the finish has been installed. The net open area of a trimmed **Top Vent** at the face of the exterior finish is .518 square inches per lineal foot.



Vent Extension Filter Fabric Socks Not Shown for Clarity

2. LIMITATIONS

None when used for the design purpose.

3. MATERIALS AND COMPOSITION

100% post recycled polystyrene and geo-textile fabric.

4. PHYSICAL PROPERTIES

Thickness 20 mils

5. CHEMICAL RESISTANCE

Not reactive to common building materials.

6. TECHNICAL DATA

Polyguard Products, Inc. provides design data and installation instructions to architects, engineers, specifiers, and contractors.

7. INSTALLATION

Storage: Protect the material from heat, crushing, moisture, mud, and construction dirt. Keep the product in the package until it will be used.

Product Placement and Alignment:

Place the flat side of the **Top Vent** against a backing wall.

When used in conjunction with **Type I Rain Screens**, align the dimples in the **Top Vent** with the dimples in the **Type I Rain Screen**.

When used in conjunction with a **Type II Rain Screen**, install the top edge of the **Type II Rain Screen** along the bottom edge of the **Top Vent**. Then cover the dimples of the **Top Vent** and abutting face of the **Type II Rain Screen** with **Rain Screen Tape**. Shape the vent extensions for embedment in the exterior finish.

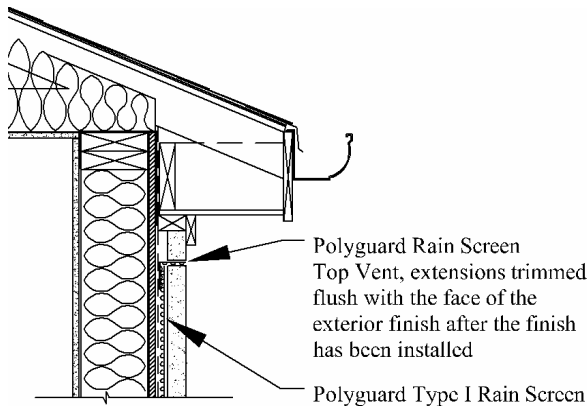
Product Attachment:

Attach *Top Vents* to framing members of a sheathed wall or head joints of a masonry backup wall using fasteners suitable for the substrate.

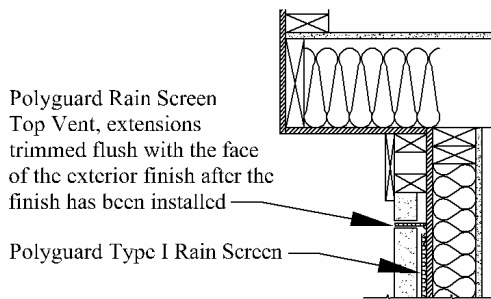
Installation

Install *Polyguard Rain Screen Top Vents* when a direct connection between a cavity space and an unconditioned and vented space is not possible, i.e. under windows, doors, or trim boards and under sills in a *Type II* application.

Type I Rain Screen Applications:

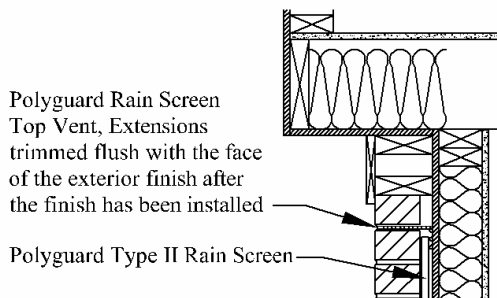


Venting a Cavity Along Closed Eaves.

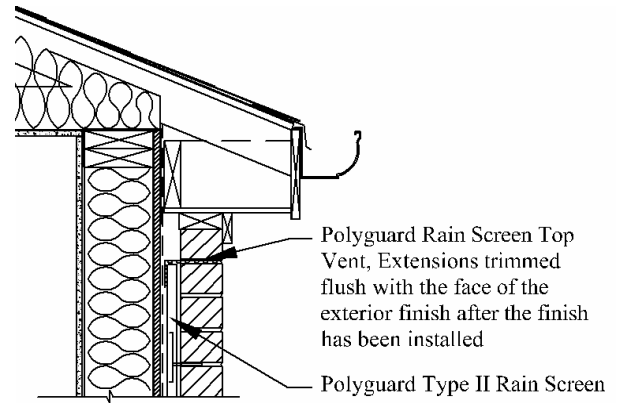


Venting a Cavity Along a Cantilever.

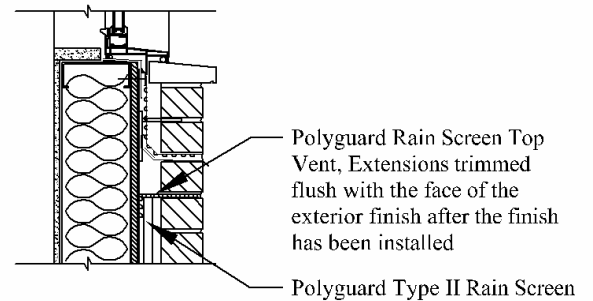
Type II Rain Screen Applications (Masonry Veneer):



Venting a Cavity Along a Cantilever.



Venting a Cavity Along Closed Eaves.



Venting a Cavity Along a Masonry Sill.

8. AVAILABILITY AND COST

Packaged 64 pieces, 224 lineal feet, per package.

Information about a distributor near you is available by phone or e-mail.

9. GUARANTEE

The *Polyguard Rain Screen Top Vent* will meet published specifications at the time of delivery.

10. TECHNICAL SERVICES

Polyguard Products, Inc. offers specialist advice to aid the architect, engineer, and contractor with the management of moisture and air in exterior wall assemblies.

© Polyguard Products 2011