

Installation Instructions

Through Wall Flashing

Polyguard Through Wall Flashing (TWF) membranes are the primary part of a Through Wall Flashing Assembly that collects water in above grade wall assemblies and directs it to the face of the exterior wall finish.

Storage: Protect the material from heat, crushing, moisture, mud, and construction dirt. Keep the product in the box until it will be used.

Preparation: Prepare the surfaces where the Polyguard TWF will be attached so that, they are smooth relative to the construction surface, clean and dry.

Product Attachment: Apply a liquid adhesive to surfaces that will receive the membrane at a rate of 250-300 sq. ft. per gallon. Use a **Polyguard Liquid Adhesive** that is compatible with the substrates. Use solvent based **Polyguard 650LT**, (in California, **Polyguard California Sealant**) for substrates that are compatible with solvent based material and use water based **Polyguard Shur-Tac** for substrates that are not compatible with solvent based materials.

Safety: Material Safety Data Sheets are available upon by phone, e-mail, or on the web.

INSTALLATION

OVERVIEW NOTES:

Polyguard TWF membranes are not designed for long term UV exposure. To protect the exterior edge from UV exposure, use the membrane in conjunction with a corrosion resistant metal drip edge and trim the exterior edge of the membrane 5/8-inch from the face of the exterior finish.

Polyguard TWF membranes require support across the length and width of the flashing. 90-degree intersections between walls and ledges should be modified to have a less severe angled transition from vertical to horizontal. Creation of an even and sloped plane at wall to ledge intersections will support the flashing and eliminate low points that could puddle water.

This angled plane is called a cant. Additionally, gaps in flashing areas will also need to be filled or bridged to provide support for flashing. An example of a gap would be the space between a steel angle and a wall in masonry veneer construction. Best practice installations employ some method of cant creation and filling and/or bridging gaps, to support a flashing membrane.

A factory cut has been made in the **Polyguards TWF** release paper 3-inches in from one edge of the flashing. This cut will allow removal of the 3-inch section of release paper and installation of that specific section and thereby make positioning and alignment of the overall membrane easier.

For best results, install rows and ends with a minimum 2-inch overlap.

Draining a flashing via dedicated weeps, closing discontinuous flashing ends with end dams, and mechanically terminating the top edge of a flashing are other essential and integral parts of a fully functioning and long term performing TWF assembly.

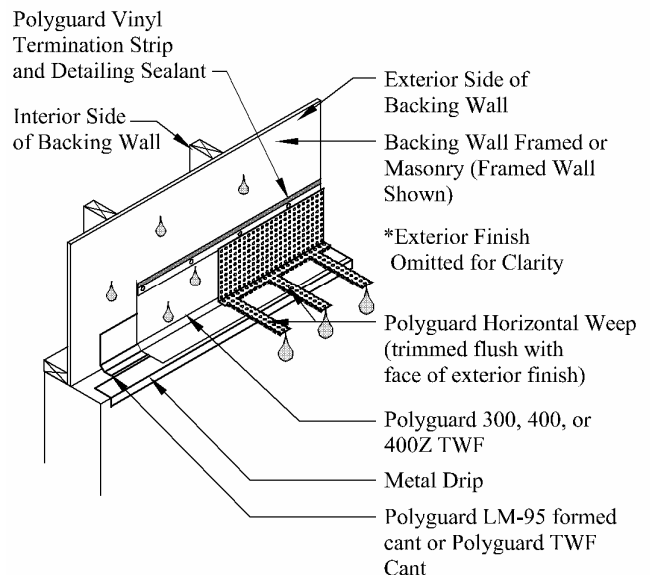


Fig.1

P.O. Box 755
Ennis, TX 75120
PH: (214) 515-5000
FX: (972) 875-9425

This information is based on our best knowledge, but
POLYGUARD cannot guarantee the results to be obtained.

Best Practice Installation Steps:

1. Prepare the surfaces to receive the flashing.
2. Apply a coating of **Polyguard Liquid Adhesive**.
3. Install a corrosion resistant metal drip edge.
4. Fig.1 Form a cant along the vertical to horizontal intersection. Use either **Polyguard LM-95**, or **Polyguard TWF Cants**, TWF Cant shown. See Fig. 2 for gap conditions
5. Install the **Polyguard TWF** membrane.
6. Apply pressure over the face of the installed membrane with a hard surfaced rubber roller or similar blunt instrument.
7. Terminate the top edge of the flashing as follows:

In cavity wall applications, illustrated above, install a **Polyguard Vinyl Termination Strip** along the top edge of the flashing.

In non-cavity wall applications, install either a strip of **Polyguard Termination Tape**, or fasten the flashing along the top edge and apply a bead of **Polyguard Detailing Sealant** along that edge tooling it to a uniform and even coverage.

8. Apply **Polyguard Detailing Sealant** along end lap seams and along the top edge of a Termination Strip.
9. Install **Polyguard Horizontal Weeps** over the face of the flashing prior to installing the exterior finish. Trim the weeps flush with the face of the exterior finish after the finish has been installed.

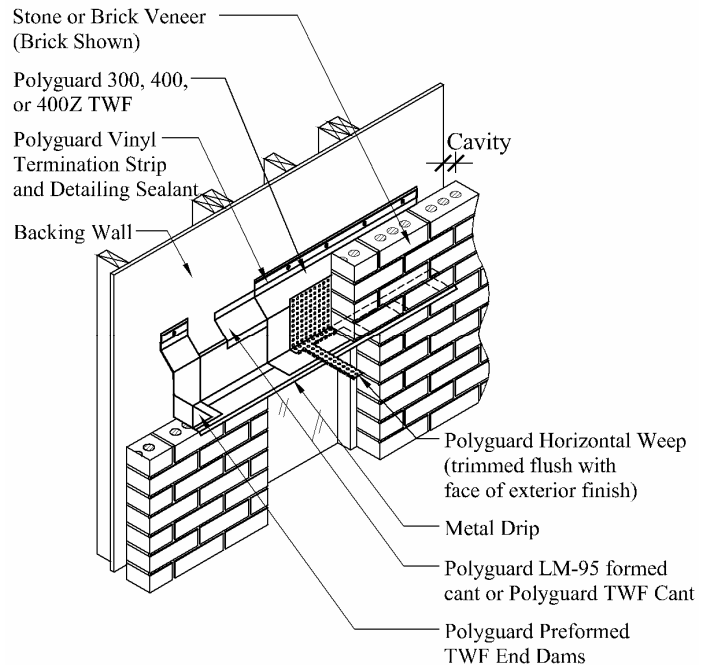


Fig. 2

Polyguard Products
PO Box 755
Ennis, TX 75120-0755
Phone: 214-515-5000
Fax: 972-875-9425
Tech Support: 513-404-0977
www.polyguardproducts.com

© Polyguard Products 2010

X:/Lit/Arch/TWF Installation Instructions.doc R 6-24-10