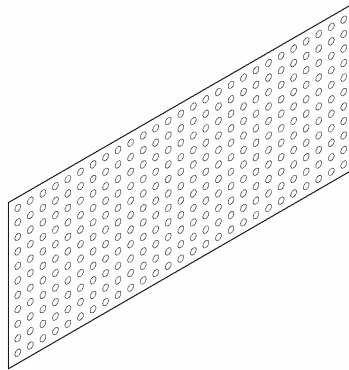




## TYPE I RAIN SCREEN

### 1. DESCRIPTION

**Polyguard Type I Rain Screen** is a 7/16-inch dimple board designed to establish and maintain a free flowing cavity between a backing wall and the exterior finish. Cavity drainage and venting rates are maximized when **Polyguard Horizontal Weeps** and **Polyguard Rain Screen Top Vents** are used at the bottom and top of wall sections.



Type I Rain Screen Isometric View

### 2. LIMITATIONS

None when used for the design purpose.

### 3. MATERIALS AND COMPOSITION

**Polyguard Type I Rain Screen** consists of 100% post recycled polystyrene.

### 4. PHYSICAL PROPERTIES

Thickness is 26 mils.  
Dimple depth 7/16-inch.

### 5. CHEMICAL RESISTANCE

Not reactive to common building materials.

### 6. TECHNICAL DATA

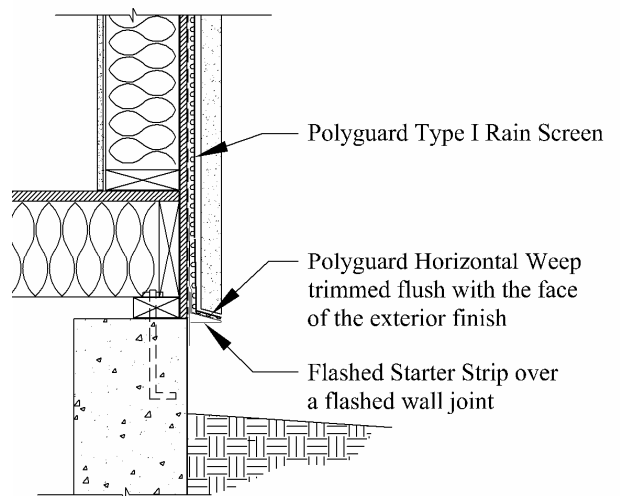
**Polyguard Products, Inc.** provides design data and installation instructions to architects, engineers, specifiers, and contractors.

### 7. INSTALLATION

**Storage:** Protect the material from heat, crushing, moisture, mud, and construction dirt. Keep the product in the package until it will be used.

**Preparation:** Prepare the supporting backing wall to comply with the building code requirements for air and water resistance.

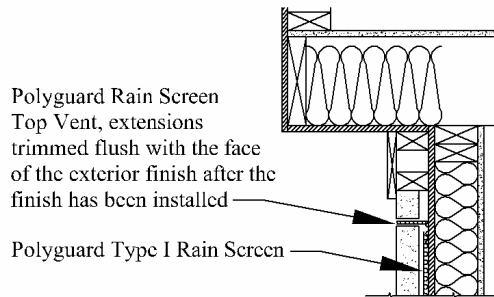
#### Product Attachment:



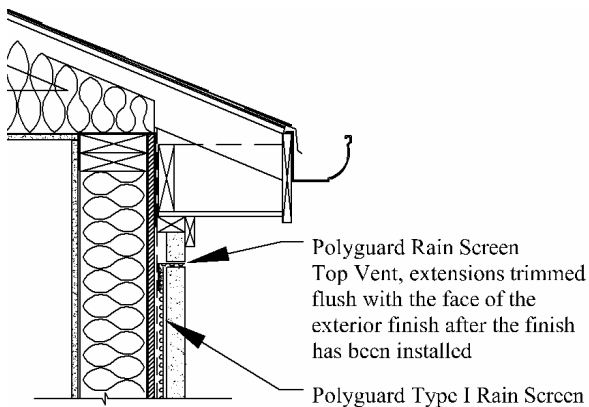
Start an application with the bottom edge atop the fabric edge of a **Polyguard Horizontal Weep** refer to the **Horizontal Weep** Data sheet for more information. Unroll the **Type I Rain Screen** over the face of a backing wall with the closed end of the cups interfacing with the wall. Secure it to framing members with cap head nails, cap head screws, or staple shanks centered in the cups. Continue covering the wall by either shingling the bottom edge over the top edge of a lower **Type I Rain Screen** or, by nesting one or more rows of dimples.

Butt end sections together or nest dimples at end joints.

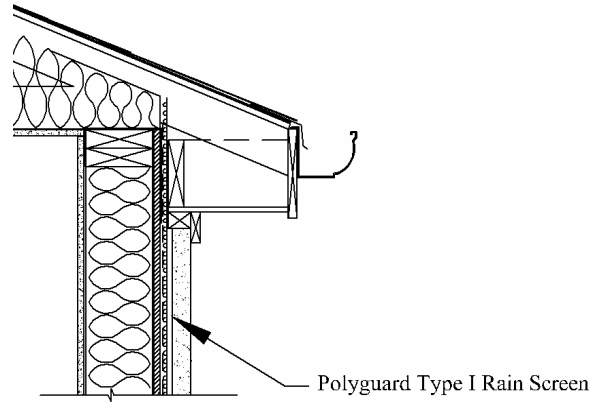
End an application by either connecting the top edge with a vented and unconditioned space or by interfacing it with a **Polyguard Rain Screen Top Vent** refer to the **Rain Screen Top Vent** Data sheet for more information.



### Top Venting a Cavity Along A Cantilever



### Top Venting a Cavity Along A Closed Eave



### Direct Venting a Cavity Into An Unconditioned And Vented Attic Space

Install siding or lathe over the **Type I Rain Screen** using fasteners and fastener spacing compliant with the material manufacturers installation information.

## 8. AVAILABILITY AND COST

**Polyguard Type I Rain Screen** is packaged in 4-foot by 50-foot rolls.

Information about a distributor near you is available by phone or e-mail.

## 9. GUARANTEE

**Polyguard Type I Rain Screen** will meet published specifications at the time of delivery.

## 10. TECHNICAL SERVICES

Polyguard Products, Inc. offers specialist advice to aid the architect, engineer, and contractor with the management of moisture and air in exterior wall assemblies.

© Polyguard Products 2010

X:/Lit/Arch/Type I Rain Screen Data Sheet R.6-15-10