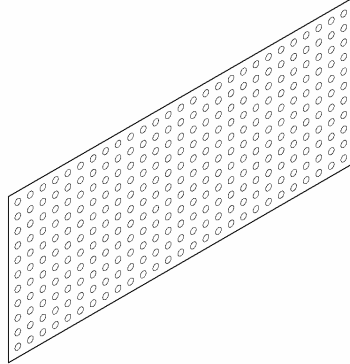


# Installation Instructions

## TYPE I RAIN SCREEN

**Polyguard Type I Rain Screen** is a 7/16-inch dimple board designed to establish and maintain a free flowing cavity between a backing wall and the exterior finish. Cavity drainage and venting rates are maximized when **Polyguard Horizontal Weeps** and **Polyguard Rain Screen Top Vents** are used at the bottom and top of wall sections.



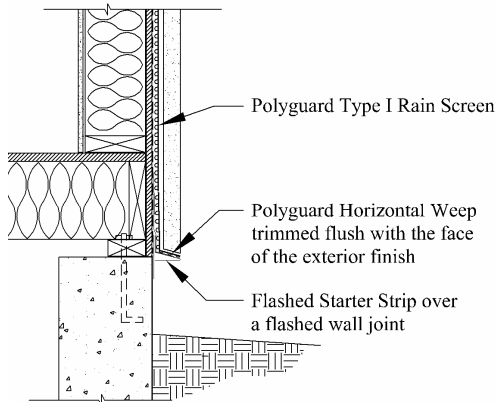
**Type I Rain Screen Isometric View**

### INSTALLATION

**Storage:** Protect the material from heat, crushing, moisture, mud, and construction dirt. Keep the product in the package until it will be used.

**Preparation:** Prepare the supporting backing wall to comply with the building code requirements for air and water resistance.

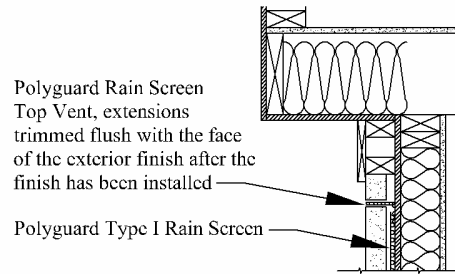
#### Product Attachment:



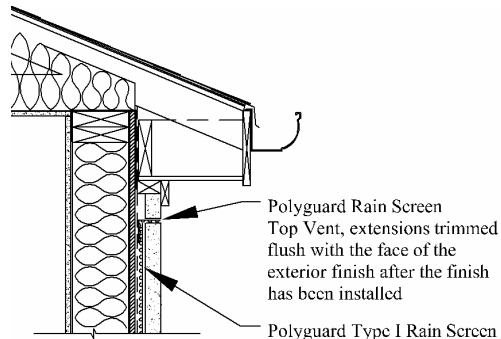
Start an application with the bottom edge atop the fabric edge of a **Polyguard Horizontal Weep** refer to the Horizontal Weep Data sheet for more information. Unroll the **Type I Rain Screen** over the face of a backing wall with the closed end of the cups interfacing with the wall. Secure it to framing members with cap head nails, cap head screws, or staple shanks centered in the cups. Continue covering the wall by either shingling the bottom edge over the top edge of a lower **Type I Rain Screen** or, by nesting one or more rows of dimples.

Butt end sections together or nest dimples at end joints.

End an application by either connecting the top edge with a vented and unconditioned space or by interfacing it with a **Polyguard Rain Screen Top Vent** refer to the Rain Screen Top Vent Data sheet for more information.



**Top Venting a Cavity Along A Cantilever**

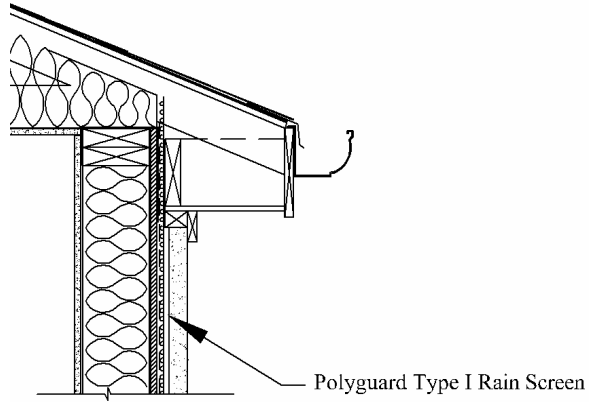


**Top Venting a Cavity Along A Closed Eave**

P.O. Box 755  
Ennis, TX 75120  
PH: (214) 515-5000  
FX: (972) 875-9425

This information is based on our best knowledge, but  
POLYGUARD cannot guarantee the results to be obtained.





**Direct Venting a Cavity Into An  
Unconditioned And Vented Attic Space**

Install siding or lathe over the **Type I Rain Screen** using fasteners and fastener spacing compliant with the material manufacturers installation information.

Polyguard Products, Inc.  
PO Box 755  
Ennis, TX 75120-0755  
Phone: 214-515-5000  
Fax: 972-875-9425  
Tech Support: 513-404-0977  
[www.polyguardproducts.com](http://www.polyguardproducts.com)

© Polyguard Products 2010

*X:/Lit/Arch/2010/Type I Rain Screen Installation Instructions. Doc R 6-15-10*