

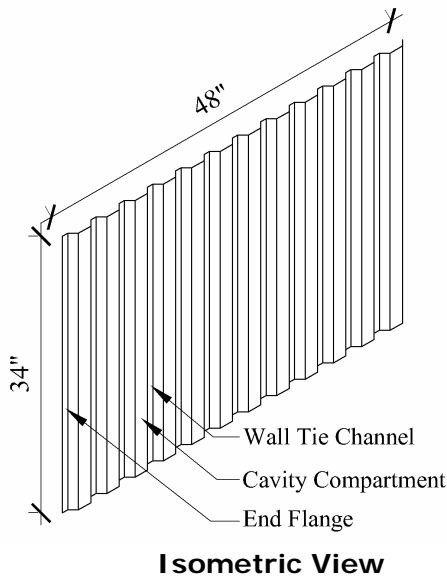
# Installation Instructions

## TYPE II RAIN SCREEN

**Polyguard Type II Rain Screen** is designed to establish dedicated cavity compartments in a masonry veneer wall assembly.

It's corrugated shape forms individual cavities that enhance the capability of the wall assembly to manage bulk water, wind, and thermal pressures. These enhanced capabilities help to neutralize the moisture and pressure loads on the backing walls of exterior wall assemblies thereby making the assembly more sustainable.

Combined with an air and water resistant backing wall that is vented along the top and bottom of wall sections, the **Type II Rain Screen** also establishes compartments that are required for a Pressure Equalized Rain Screen Wall. Pressure Equalized Rain Screen Walls have been defined by the building sciences as the most effective way to manage the moisture movement mechanisms of liquid flow, air movement, capillary suction, and vapor diffusion in exterior wall assemblies.

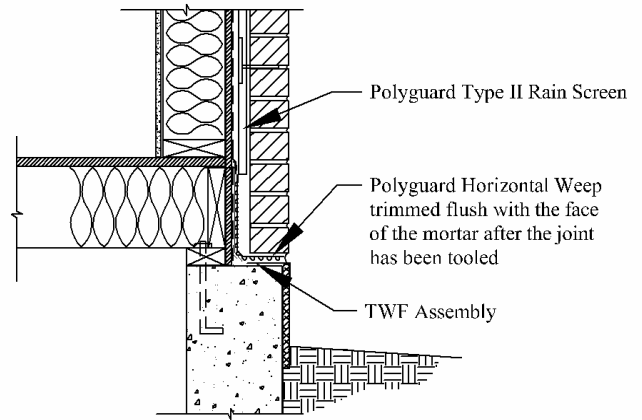


### INSTALLATION

**Storage:** Protect the material from heat, crushing, moisture, mud, and construction dirt. Keep the product in the package until it will be used.

**Preparation:** Prepare the supporting backing wall to comply with the building code requirements for air and water resistance.

### Product Attachment:



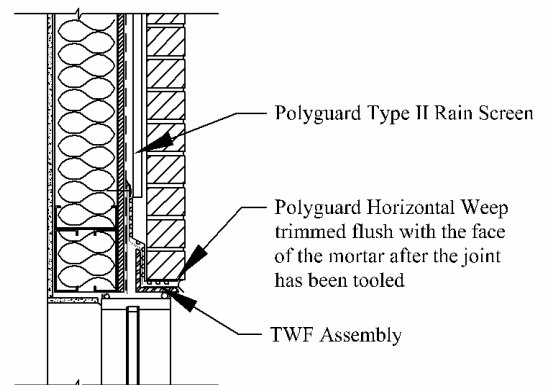
Place the bottom edge of a **Type II Rain Screen** atop the top edge of a **Polyguard Horizontal Weep**.

Align the Wall Tie Channels over the framing studs.

Hold the **Type II Rain Screen** temporarily in place with Arrow T-150 staples installed in the Wall Tie Channels. Permanently hold the **Type II Rain Screen** in place with masonry wall ties installed in the Wall Tie Channels aligned with framing studs.

Lap end flanges onto each other and rows with a 2-inch overlap.

### Common Bottom Of Wall Section Details

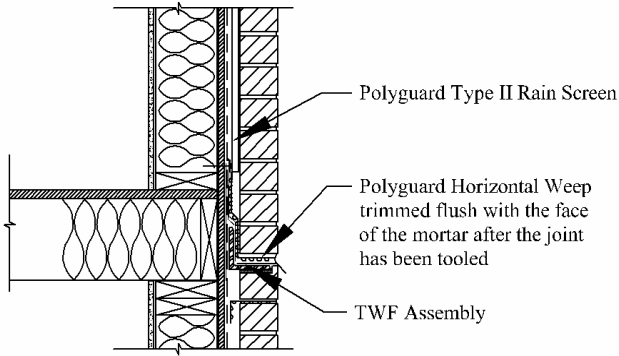


### Type II Rain Screen Above a Window or Door

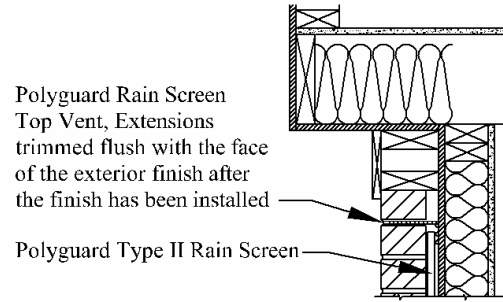
P.O. Box 755  
Ennis, TX 75120  
PH: (214) 515-5000  
FX: (972) 875-9425

This information is based on our best knowledge, but POLYGUARD cannot guarantee the results to be obtained.

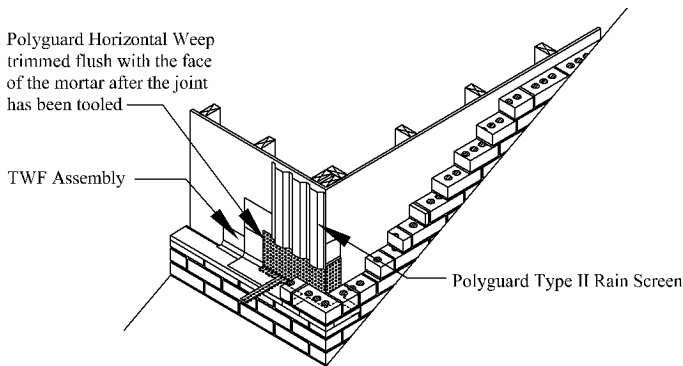




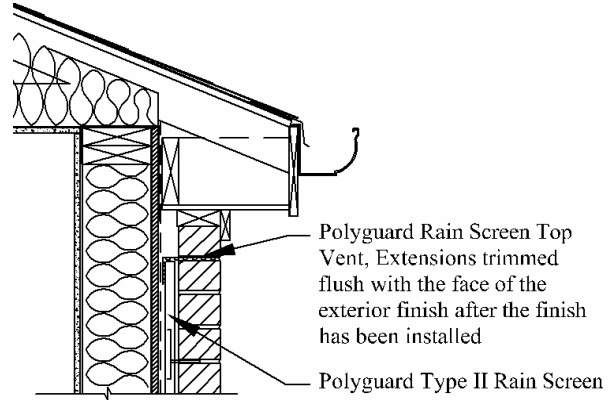
**Type II Rain Screen Above a Shelf Angle**



**Top Venting Cavities Along A Cantilever**

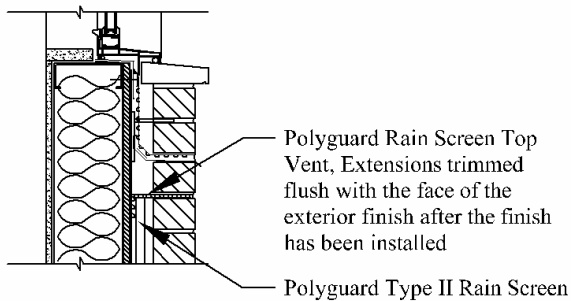


**Type II Rain Screen Above a Roof To Wall Intersection** (Continuation of the *Type II Rain Screen* along the side wall is not illustrated for clarity)

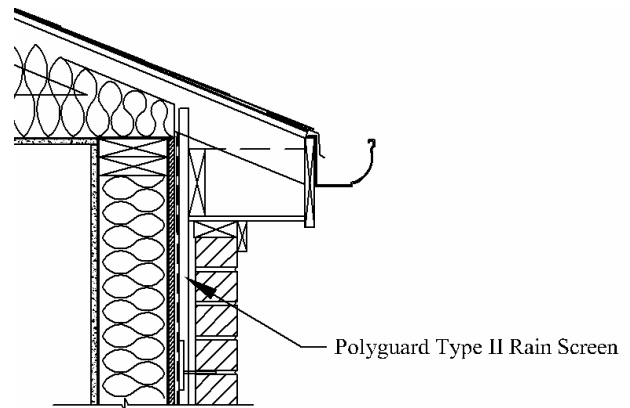


**Top Venting Cavities Along Closed Eaves**

**Common Top Venting Details**



**Top Venting Cavities Under A Masonry Sill.**



**Direct Venting Cavities Into An Unconditioned And Vented Attic Space**

© Polyguard Products 2010