

TYPE II RAIN SCREEN

Patent 7,421,826

1. DESCRIPTION

Polyguard Type II Rain Screen is designed to establish dedicated cavity compartments in a masonry veneer wall assembly.

Its corrugated shape forms individual cavities that enhance the capability of the wall assembly to manage bulk water, wind, and thermal pressures. These enhanced capabilities help to neutralize the moisture and pressure loads on the backing walls of exterior wall assemblies thereby making the assembly more sustainable.

Combined with an air and water resistant backing wall that is vented along the top and bottom of wall sections, the **Type II Rain Screen** also establishes compartments that are required for a Pressure Equalized Rain Screen Wall. Pressure Equalized Rain Screen Walls have been defined by the building sciences as the most effective way to manage the moisture movement mechanisms of liquid flow, air movement, capillary suction, and vapor diffusion in exterior wall assemblies.

2. LIMITATIONS

None when used for the design purpose.

3. MATERIALS AND COMPOSITION

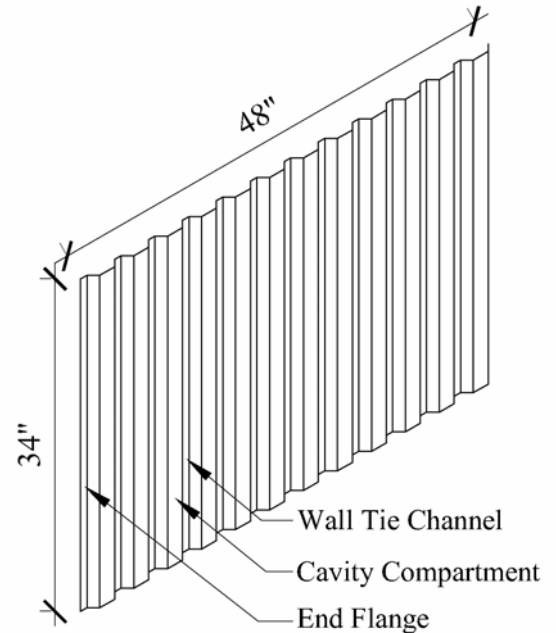
100% post recycled polystyrene.

4. PHYSICAL PROPERTIES

Polystyrene thickness is 26 mils.

5. CHEMICAL RESISTANCE

Not reactive to common building materials.



Isometric View

6. TECHNICAL DATA

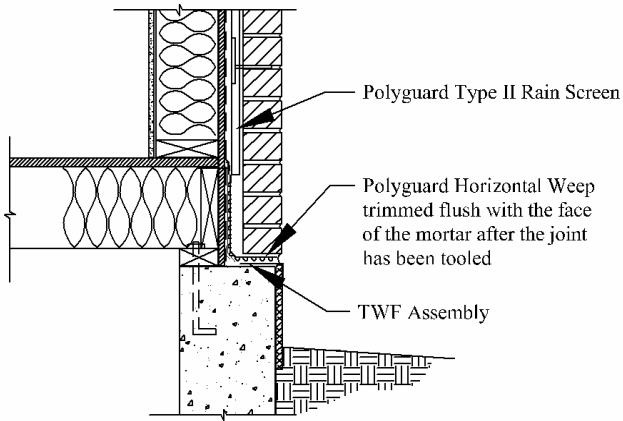
Polyguard Products, Inc. provides design data and installation instructions to architects, engineers, specifiers, and contractors.

7. INSTALLATION

Storage: Protect the material from heat, crushing, moisture, mud, and construction dirt. Keep the product in the package until it will be used.

Preparation: Prepare the supporting backing wall to comply with the building code requirements for air and water resistance.

Product Attachment:



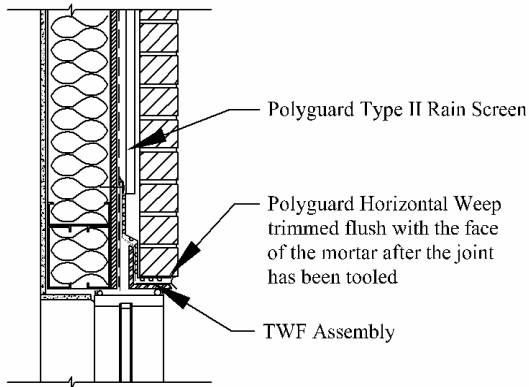
Place the bottom edge of a **Type II Rain Screen** atop the top edge of a **Polyguard Horizontal Weep**.

Align the Wall Tie Channels over the framing studs.

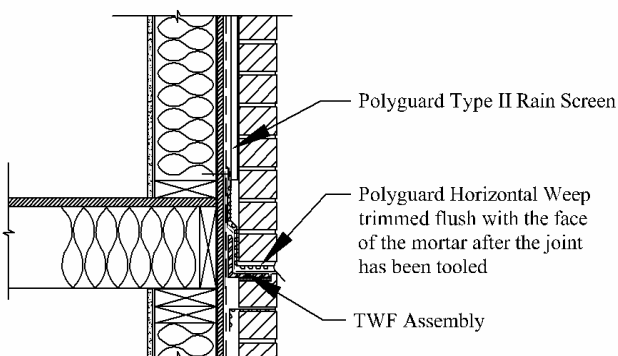
Hold the **Type II Rain Screen** temporarily in place with Arrow T-150 staples installed in the Wall Tie Channels. Permanently hold the **Type II Rain Screen** in place with masonry wall ties installed in the Wall Ties Channels aligned with framing studs.

Lap end flanges onto each other and rows with a 2-inch overlap.

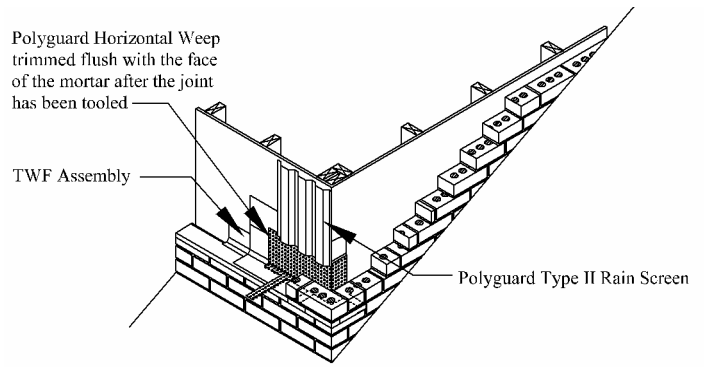
Common Bottom Of Wall Section Details



Type II Rain Screen Above a Window or Door

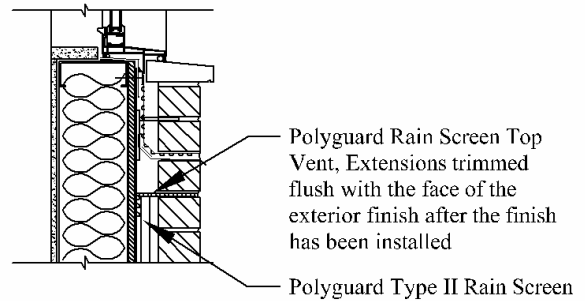


Type II Rain Screen Above a Shelf Angle

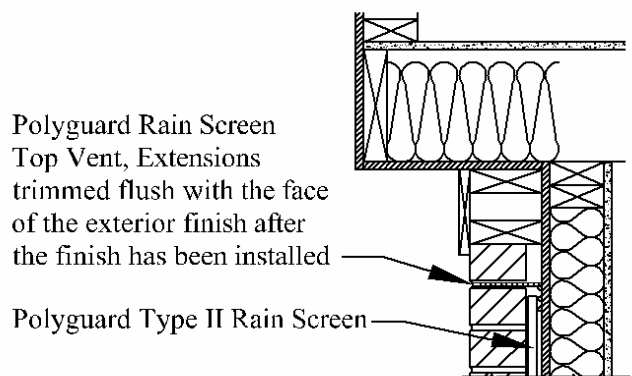


Type II Rain Screen Above a Roof To Wall Intersection (Continuation of the **Type II Rain Screen** along the side wall is not illustrated for clarity)

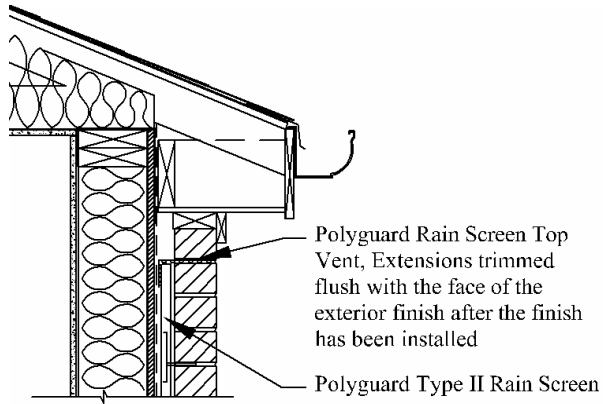
Common Top Venting Details



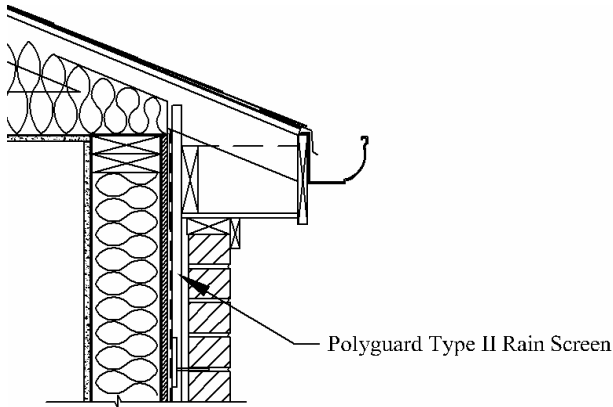
Top Venting Cavities Under A Masonry Sill.



Top Venting Cavities Along A Cantilever



Top Venting Cavities Along Closed Eaves



Direct Venting Cavities Into An Unconditioned And Vented Attic Space

8. AVAILABILITY AND COST

Polyguard Type II Rain Screens are packaged 30 sheets per carton.

Information about a distributor near you is available by phone or e-mail.

9. GUARANTEE

Polyguard Type II Rain Screen will meet published specifications at the time of delivery.

10. TECHNICAL SERVICES

Polyguard Products, Inc. offers specialist advice to aid the architect, engineer, and contractor with the management of moisture and air in exterior wall assemblies.

© Polyguard Products 2010

X:/Lit/Arch/Type II Rain Screens.doc R 6-30-10