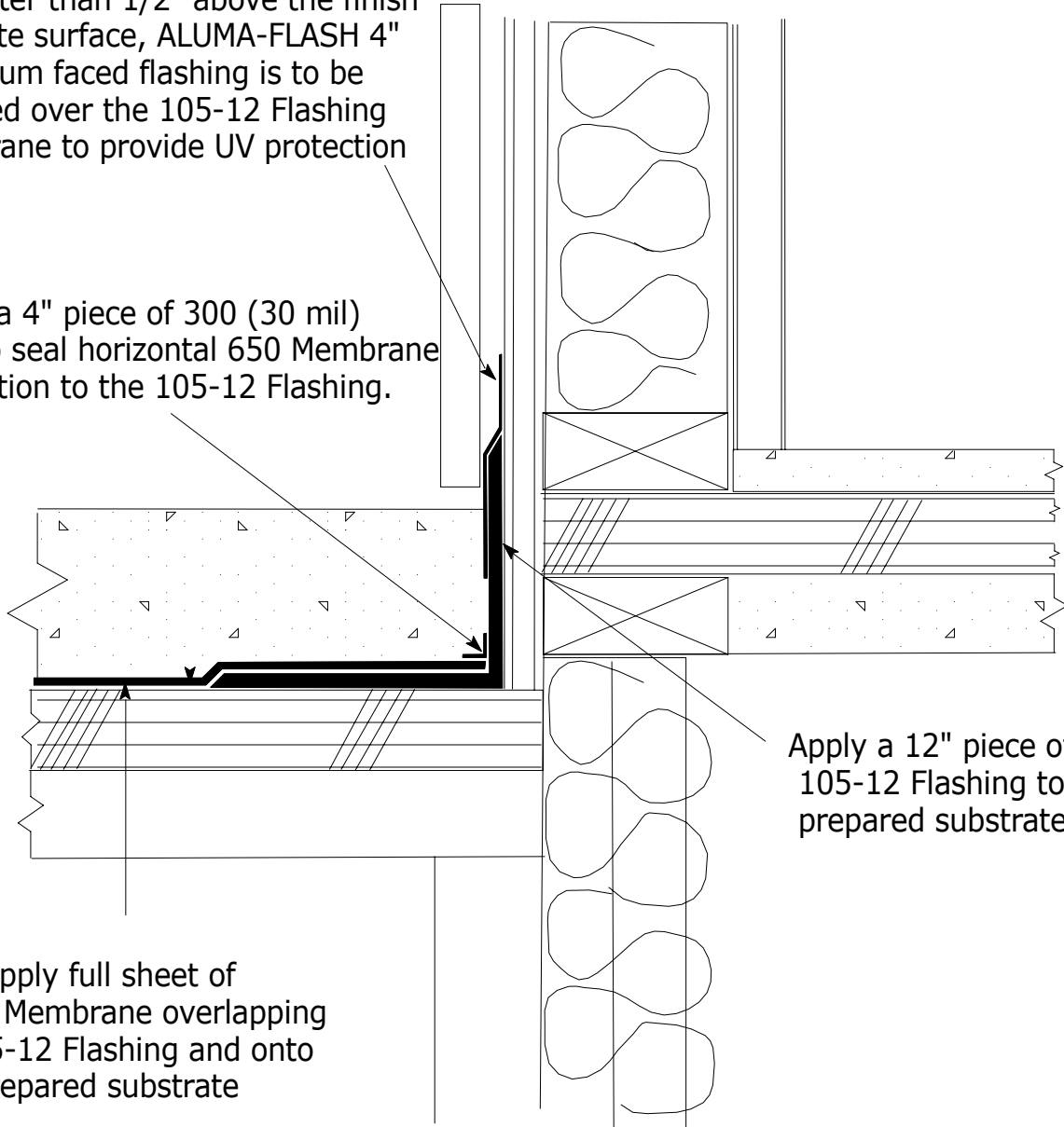


In the event the space between the bottom of the exterior finish material is greater than 1/2" above the finish concrete surface, ALUMA-FLASH 4" aluminum faced flashing is to be installed over the 105-12 Flashing Membrane to provide UV protection

Apply a 4" piece of 300 (30 mil) Flashing to seal horizontal 650 Membrane termination to the 105-12 Flashing.



Apply a 12" piece of 105-12 Flashing to prepared substrate

Apply full sheet of 650 Membrane overlapping 105-12 Flashing and onto prepared substrate

## SECTION WALL FLASHING @ BALCONY

POLYGUARD 105-12 FLASHING DETAIL

