

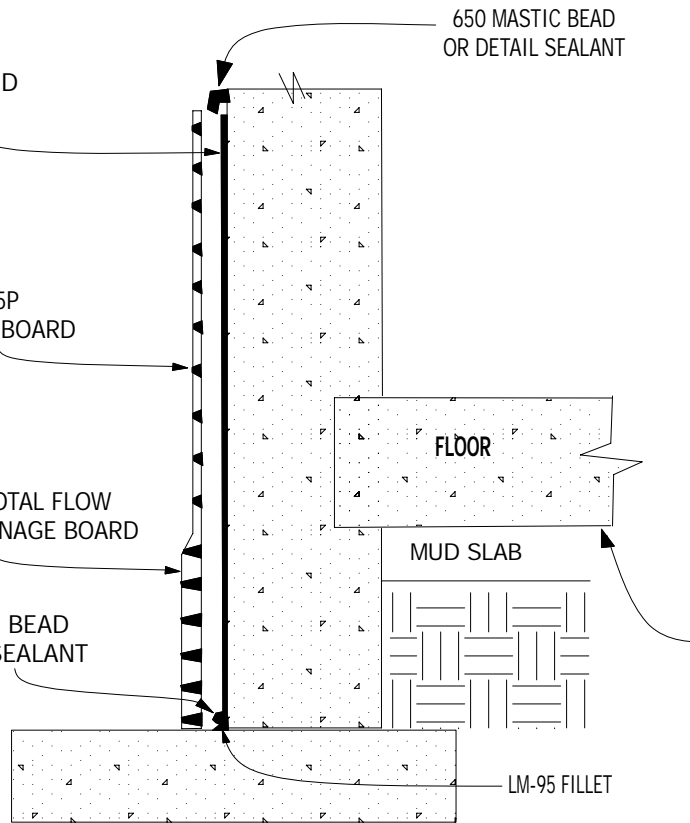
650 MEMBRANE APPLIED TO SUBSTRATE
 PREPARED WITH 650 LT LIQUID
 ADHESIVE - MEMBRANE CAN BE TERMINATED
 AT FOOTER AS LONG
 AS INSIDE FLOOR HEIGHT IS A
 MINIMUM OF 16" - 18" ABOVE FOOTER

POLYGUARD FLOW 15P
 PROTECTION / DRAINAGE BOARD

POLYGUARD TOTAL FLOW
 PERIMETER DRAINAGE BOARD

650 MASTIC BEAD
 OR DETAILS SEALANT

650 MASTIC BEAD
 OR DETAIL SEALANT



INTERIOR FLOOR HEIGHT
 16" - 18" ABOVE FOOTER

LM-95 FILLET

WP16

SECTION @ 650 WITH RAISED INTERIOR FLOOR

© POLYGUARD PRODUCTS, INC. 2008

(NOT TO SCALE)

Polyguard Products, Inc.
 P.O. Box 755 - Ennis, TX 75119
 Phone: 214-515-5000 Fax: 972-875-9425
 Web Site - www.polyguardproducts.com
 x:\u\s\n\nd\undersell\2007\650\wp16raisedfloorheight

Polyguard

The information provided is based on data and knowledge considered to be true and accurate and is offered for the users' consideration, investigation and verification, but we do not warrant the results to be obtained. Please read all data sheets, statements, recommendations or suggestions in conjunction with our conditions of sale, which apply to all goods supplied by us.