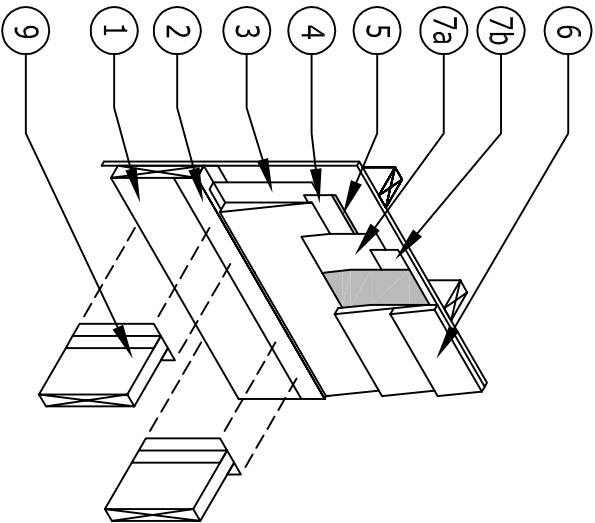
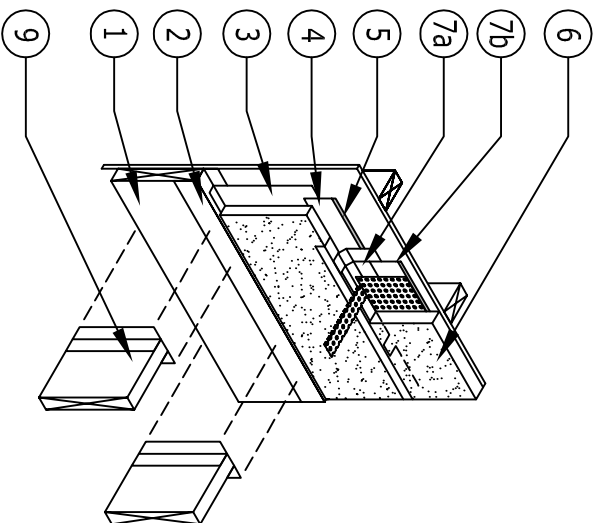


**TWF INSTALLATION SEQUENCE FOR APPLIED EXTERIOR FINISHES AT WALL TO DECK FRAMING:**

1. INSTALL THE DECK LEDGER BOARD / RIM JOIST.
2. FABRICATE AND INSTALL A METAL FLASHING TO COVER FROM 1-1/2-INCHES ON THE BACKING WALL TO ACROSS THE TOP EDGE OF THE LEDGER / RIM WITH A MINIMUM 15-DEGREE SLOPE AND THEN ONTO A MINIMUM OF 2-INCHES OF THE FACE OF THE LEDGER / RIM.
3. INSTALL POLYGUARD PREFORMED TWF CORNERS AND END DAMS AND POLYGUARD 300, 400, OR 400Z TWF ADHERED TO A MINIMUM OF 8-INCHES OF THE BOTTOM OF THE BREAK IN THE BACKING WALL LEG OF THE METAL FLASHING.
4. IN CAVITY WALL AND REVERSED SHINGLE APPLICATIONS INSTALL A POLYGUARD STAINLESS STEEL OR VINYL TERMINATION STRIP ALONG THE TOP EDGE OF THE FLASHING. IN NON-CAVITY WALL AND REVERSED SHINGLE APPLICATIONS INSTALL A POLYGUARD TERMINATION TAPE ALONG THE TOP EDGE OF THE FLASHING. IF STEP 7 IS ENACTED MOVE THIS STEP TO FOLLOW STEP 7.
5. APPLY POLYGUARD DETAILING SEALANT ALONG THE TOP EDGE OF THE TERMINATION STRIPS AND ALONG END LAPS. TOOL THE SEALANT TO A UNIFORM AND EVEN COVERAGE.
6. INSTALL THE APPLIED EXTERIOR FINISH, SIDING SHOWN, WITH AN 1/8-INCH SEPARATION BETWEEN THE FINISH AND THE METAL FLASHING.
7. IN CLIMATE ZONES WHERE THERE IS AN ANTICIPATED SNOW OR RAIN LOAD, DETERMINE THE HEIGHT OF THAT LOAD AND THEN INSTALL A TWF MEMBRANE WITH THE LOWER EDGE ABOVE THE LOAD HEIGHT AND WITH THE TOP EDGE TERMINATED, NUMBERS 7a AND 7b. SHIM THE PLACEMENT OF THE COVERING SIDING 1/16-INCH TO MAINTAIN AN OPEN DRAINAGE OUTLET FOR THE FLASHING. (FIG. 2 INSTALL A TWF THAT DRAINS VIA HORIZONTAL WEEP EXTENSIONS THAT ARE EMBEDDED IN THE EXTERIOR FINISH.)
8. WHERE POLYGUARD HORIZONTAL WEEPS ARE USED FOR DRAINAGE TRIM THE WEEP EXTENSIONS FLUSH WITH THE FACE OF THE EXTERIOR FINISH.
9. COMPLETE CONSTRUCTION OF THE DECK.



**FIG. 1**



**FIG. 2**

**NOTE:** FREE THE SURFACES THAT WILL RECEIVE THE FLASHING FROM IRREGULARITIES THAT WOULD INTERFERE WITH A FLAT INTERFACE WITH THE FLASHING. OR POSE A FLASHING PUNCTURE HAZARD. APPLY A COATING OF 650LT, CALIFORNIA SEALANT, GREEN CALIFORNIA SEALANT OR SHUR-TAC WATER-BASED LIQUID ADHESIVE TO CLEAN AND DRY SURFACES THAT WILL BE RECEIVING THE FLASHINGS. BASE SELECTION OF LIQUID ADHESIVE ON SUBSTRATE COMPATIBILITY AND VOC REQUIREMENTS. REFER TO POLYGUARDS PUBLICATION "PRINCIPLES OF WATERPROOFING ABOVE GRADE EXTERIOR WALL ASSEMBLIES" FOR STEP BY STEP INSTALLATION INSTRUCTIONS.

**TWF21**

**TWF APPLIED EXTERIOR FINISH HEADS AT WALL TO DECK FRAMING**

© POLYGUARD PRODUCTS, INC. 2010

\*\*MATERIALS SEPARATED FOR CLARITY\*\* NTS

Polyguard Products, Inc.  
 P.O. Box 755 - Emms, TX 75119  
 Phone: 214-515-5000 Fax: 972-975-9425  
 Web Site - www.polyguardproducts.com

**Polyguard**

This literature is provided based on data and knowledge considered by the author and is intended for general informational purposes only. It is not intended to constitute an offer of insurance or any other financial product. Please refer to the actual policy for complete terms, conditions, coverages, exclusions, and limitations. Coverage is provided by the issuing company and is subject to underwriting. Coverage is not available in all states.