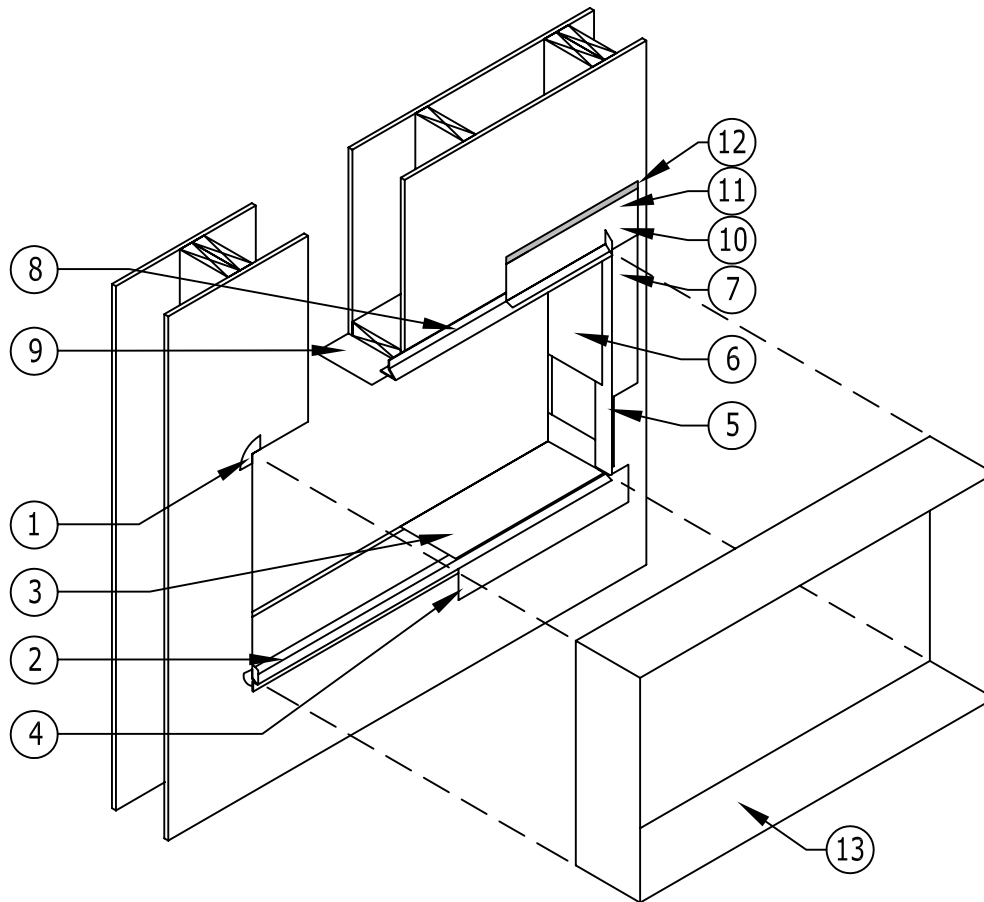


INSTALLATION SEQUENCE FOR FLASHING AN HVAC WALL SLEEVE OPENING:



1. INSTALL 2-INCH BY 3-INCH STRIPS OF POLYGUARD 606 TAPE ONTO EACH CORNER OF THE ROUGH OPENING.
2. FABRICATE A METAL SILL EDGE AND INSTALL IT ON THE SILL ROUGH OPENING.
3. INSTALL POLYGUARD JT-40 FLASHING ON THE SILL WITH ITS INTERIOR EDGE ALIGNED WITH THE INTERIOR EDGE OF THE FRAMING, THE FORWARD EDGE COVERING THE METAL SILL EDGE, AND THE ENDS COVERING 3-INCHES OF THE JAMB. TRIM THE FORWARD EDGE BACK 5/8-INCH FROM THE TOP BEND IN THE METAL.
4. INSTALL A MINIMUM 4-INCH WIDE POLYGUARD JT-40 FLASHING TO COVER THE METAL SILL EDGE WALL FLANGE AND THE BACKING WALL, AND EXTEND THE FLASHING 3-INCHES BEYOND EACH JAMB.
5. FABRICATE TWO METAL JAMB EDGES AND INSTALL THEM ALONG THE JAMB ROUGH OPENING.
6. INSTALL POLYGUARD JT-40 FLASHING ON THE JAMB WITH ITS INTERIOR EDGE ALIGNED WITH THE INTERIOR EDGE OF THE FRAMING AND FORWARD EDGE COVERING THE METAL JAMB EDGE. TRIM THE FORWARD EDGE BACK 5/8-INCH FROM THE FORWARD BEND IN THE METAL.
7. INSTALL A MINIMUM 4-INCH WIDE POLYGUARD JT-40 FLASHING TO COVER EACH METAL JAMB EDGE WALL FLANGE AND THE BACKING WALL, AND EXTEND THE FLASHING 3-INCHES BEYOND THE SILL AND HEAD.
8. FABRICATE A METAL HEAD EDGE AND INSTALL IT ON THE HEAD ROUGH OPENING.
9. INSTALL POLYGUARD JT-40 FLASHING ON THE HEAD WITH ITS INTERIOR EDGE ALIGNED WITH THE INTERIOR EDGE OF THE FRAMING, THE FORWARD EDGE COVERING THE METAL HEAD EDGE, AND THE ENDS COVERING 3-INCHES OF THE JAMB. TRIM THE FORWARD EDGE BACK 5/8-INCH FROM THE FORWARD BEND IN THE METAL.
10. INSTALL A MINIMUM 4-INCH WIDE POLYGUARD JT-40 FLASHING TO COVER THE METAL HEAD EDGE WALL FLANGE AND THE BACKING WALL, AND EXTEND THE FLASHING 3-INCHES BEYOND EACH JAMB. TRIM THE FORWARD EDGE OF THE FLASHING BACK 5/8-INCH FROM THE FORWARD BEND IN THE METAL.
11. IN CAVITY WALL AND REVERSED SHINGLE APPLICATIONS INSTALL A POLYGUARD FLARED TERMINATION STRIP ALONG THE TOP EDGE OF THE FLASHING (NOT SHOWN).
12. IN NON-CAVITY WALL APPLICATIONS, APPLY POLYGUARD DETAILING SEALANT ALONG THE TOP EDGE OF THE TERMINATION STRIPS, ALONG END LAPS, AND ALONG THE EDGE TO SHEATHING/CMU INTERFACES. TOOL THE SEALANT TO A UNIFORM AND EVEN COVERAGE.
13. INSTALL THE HVAC SLEEVE.
14. INSTALL, ON THE INTERIOR AND EXTERIOR SIDES OF THE SLEEVE, A BACKER ROD AND SEALANT IN THE SPACE BETWEEN THE ROUGH OPENING AND SLEEVE, NOT SHOWN.

NOTE: THIS ROUGH OPENING WALL IS SHOWN AS FRAME BUT COULD BE MASONRY. THE INSTALLATION SEQUENCE FOR FLASHING IS THE SAME FOR EITHER MATERIAL OF CONSTRUCTION. FREE THE SURFACES THAT WILL RECEIVE THE FLASHING FROM IRREGULARITIES THAT WOULD INTERFERE WITH A FLAT INTERFACE WITH THE FLASHING, OR POSE A FLASHING PUNCTURE HAZARD. APPLY A COATING OF POLYGUARD 650LT, CALIFORNIA SEALANT, GREEN CALIFORNIA SEALANT OR SHUR-TAC WATER-BASED LIQUID ADHESIVE TO CLEAN AND DRY SURFACES THAT WILL BE RECEIVING THE FLASHINGS. WIPE SURFACES COATED WITH A POLY WALL AIR BARRIER WITH A 30% SOLUTION OF ISOPROPYL ALOCOHOL AND WATER.

WDF25

FLASHING AN HVAC WALL SLEEVE OPENING

(NOT TO SCALE)

© POLYGUARD PRODUCTS, INC. 2011

Polyguard Products, Inc.
P.O. Box 755 - Ennis, TX 75119
Phone: 214-515-5000 Fax: 972-875-9425
Web Site - www.polyguardproducts.com

Polyguard

MATERIALS SEPARATED FOR CLARITY

The information provided is based on data and knowledge considered to be true and accurate and is offered for the users' consideration, investigation and verification, but we do not warrant the results to be obtained. Please read all data sheets, statements, recommendations or suggestions in conjunction with our conditions of sale, which apply to all goods supplied by us.