

## TERM® Tile Underlayment|Termite Barrier



International Code Council  
Termite Barrier System  
Report ESR-3632

[Link to ICC ESR-3632](#)

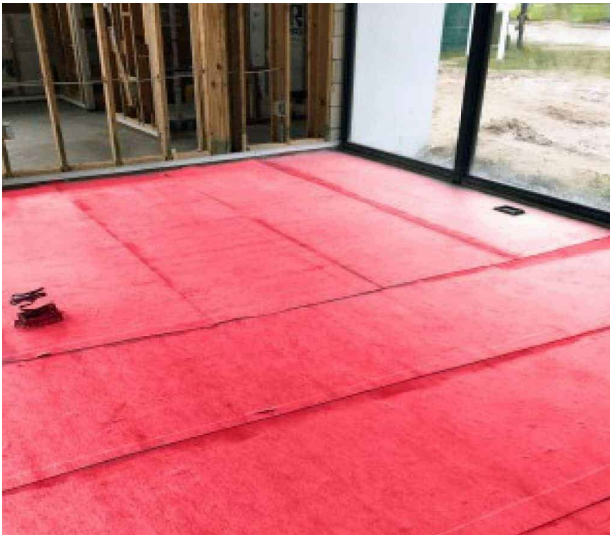
## Product Data Sheet

EPA Establishment No. 89537-TX-1

### DESCRIPTION

TERM® Tile Underlayment|Termite Barrier is a composite membrane of fabric and TERM Water|Termite|Sealant Barrier, 60 mils in thickness. This elastomeric, self-adhesive barrier is wound on cores with a disposable silicone coated release sheet.

[TERM® Tile Underlayment|Termite Barrier installed in](#)



[The New American Home – 2017, built by NAHB in Orlando, FL](#)

### ADVANTAGES

TERM Tile Underlayment|Termite Barrier is a non-structural barrier which when properly constructed as part of the building envelope, blocks both termites and water. Documentation can be found at: [Termite Barrier Development](#). TERM Waterproofing|Termite Barrier does not contain pesticides and is classified by the EPA as a physical barrier.

Additionally, TERM Tile Underlayment|Termite Barrier fills the traditional role of anti-fracture tile underlayment, helping to prevent cracks in the subfloor from appearing in the tile surface above by absorbing stress created by cracks up to 1/8".

Plus, TERM Tile Underlayment|Termite Barrier has sound absorbing and insulating qualities making the floor quieter and warmer in winter.

### REFERENCES

#### LEED

Click here to view [LEED-v4-Documentation](#).

### INSTALLATION

#### Safety

All Polyguard products must be handled in a safe manner. Some products (some packaged sealants or primers) contain solvents, and these deserve special attention to safety since their vapors are both flammable and harmful if inhaled. Read both the product label and the Safety Data Sheet (SDS) before use. SDS sheets can be obtained at our website [Link to SDS's](#). Call Polyguard at 214-515-5000 if you have any questions. Health Product Declaration information is also available [Link to HPD Info](#).

Purchaser is responsible for complying with all applicable federal, state, or local laws and regulations.

**Cool Weather:** When applied in cool temperature conditions, the adhesive surface of TERM Tile Underlayment|Termite Barrier may lose a portion of its adhesiveness. The following measures will improve adhesion in cool installation conditions:

1. Keep rolls of barrier in a warm storage area prior to using.
2. On exterior surfaces, Polyguard 650 LT Liquid Adhesive may be used.

#### Preparatory Work

**Handling Materials:** Polyguard membranes should be handled and stored to prevent injury to packages. Material should be stored in a cool, dry place, kept from contact with earth and protected from weather. Materials should be stored in heated buildings during cold weather.

**Surface Preparation:** The subfloor shall be clean, dry, and dust free. Non-moving cracks >3/16" should be filled prior to application. If the floor does not have old adhesive from previous covering, apply 650 WB™ Waterbase Liquid Adhesive at the rate of approximately 250-350 ft<sup>2</sup>/gallon, being sure to stir the liquid adhesive prior to use. (If old adhesive from a previous floor is found, call Polyguard for technical guidance). Allow liquid adhesive to dry to a slight tacky surface. Can be applied with brush, short nap roller or spray applied, but do not multicoat or apply excess amounts.

**Application:** The important thing to remember is that the TERM Tile Underlayment|Termite Barrier, when completely installed, should form a 100% seal across the entire horizontal surface of the

floor. There should be no gaps between the barrier sealant of adjacent rolls, or between the *TERM Sill Moisture|Termite Barrier* sealant extending out from the edge of the sill plate.

Cut roll to desired length. Remove the silicone coated release sheet immediately before application. Place the exposed adhesive bottom onto the subfloor, butting against, but not overlapping, the adjacent piece. Smooth into place as you go, trying to avoid air blisters. If blisters do occur, they can be slit and the membrane pressed flat. Use pressure from a roller or other wise to ensure that the barrier is well conformed to the subfloor surface. If thin set mortar is used, then it is recommended to use a latex modified thin set.

**Inspection and Repairs:** If at completion any gaps are found between adjacent sealant areas, they should be filled with *TERM Penetration Sealant Barrier*.

**LIMITATIONS**

This material is not recommended for use on subfloor surfaces where water vapor transmission or head pressure exists (example shower stalls or shower pans). This material is not recommended where cracks exceed 3/8", areas with horizontal movement > 1/4" or expansion joints that move vertically and horizontally.

*Polyguard's TERM™ Barrier* has been extensively tested, both in the laboratory and in long term field trials at multiple sites, against *Reticulitermes flavipes* and *Coptotermes formosanus* subterranean termites, which can be said to be the most voracious insects in the United States measured in terms of property damage.

**PHYSICAL PROPERTIES**

<b>TERM® Tile Underlayment Termite Barrier</b>		
<b>Property</b>	<b>Test Method</b>	<b>Typical Result</b>
Long Term Testing against Termite Penetration	ICC AC 380 Acceptance Criteria for Termite Physical Barriers	ICC ESR compliance <a href="#">ICC ESR-3632</a>
Elongation of Barrier Sealant – Percent Stretch Before Failure	ASTM D 412	> 1000%
Permeance to Moisture and Water Vapor	ASTM E 96-B Grains/ft2/hr/in HGF ( <i>grains/hr/m2</i> )	.035
Water Absorption	ASTM D 570	0.1%
Low Temperature Flexibility	ASTM D 146 180° bend over 1" mandrel at -25°F (-32°C)	No cracking or delamination
Total Thickness	ASTM D 1000	.060"
Peel Adhesion	ASTM D1000 – per inch width	>10 lbs.
*Robinson Test – load cycling	ASTM C 627	Rated for light commercial
Impact Insulation Class <i>6" slab / 40 mil barrier / quarry tile / ceiling</i>	ASTM E 492 04 ASTM E 989 89	IIC = 69 dB
Sound Transmission Class <i>6" slab / 40 mil barrier / quarry tile / ceiling</i>	ASTM E 90 04 ASTM E 413 04	STC = 69 dB

There are many other termite species, not known to be present in the United States, which are equally or more voracious than the U.S. species which were tested. A limited amount of testing outside of the United States has been done or is in progress. Contact Polyguard for up to date information about non-domestic testing.

The information in this data sheet is designed to be helpful to the reader. It is based on experience and information considered to be accurate and true. Readers should carefully consider and verify the information with investigation of any areas with uncertainty. *Polyguard* does not warrant the results to be obtained. Additionally, please read everything here in conjunction with *Polyguard's* conditions of sale, which are applicable to everything supplied by us. No statement here is intended for any use which would infringe any patent or copyright.

Purchaser is responsible for complying with all applicable federal, state, or local laws and regulations covering use of the product including waste disposal.

Contact *Polyguard Products, Inc.* for further information.

**PACKAGING**

<b>TERM Tile Underlayment Termite Barrier PACKAGING DATA</b>		
<b>ROLL SIZE</b>	<b>ROLLS / CARTON</b>	<b>LBS / CTN</b>
37" x 50.3'	1	60#

X:\Mktg\Lit\31\2018–TERM Tile Underlayment|Termite Barrier.doc R81120