

## PRODUCT DATA SHEET

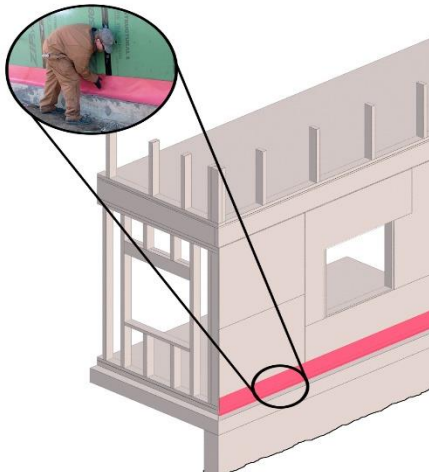


## Flashing Water | Termite Barrier



### POINT OF PROTECTION

Protects base of sheathing against termite and water entry



### DESCRIPTION

*TERM Flashing|Termite Barrier* is applied where the horizontal concrete slab intersects with exterior sheathing. This area is a frequent entry point for termites which have come up on the outside of the foundation wall.

*TERM Flashing|Termite Barrier UV* also available with 12 months UV resistance

### ADVANTAGES

*TERM Flashing|Termite Barrier* is a non-structural pest barrier which, when properly constructed as part of the building envelope, acts as a barrier to all insects.

*TERM Flashing|Termite Barrier* is unique because it is backed by 21 years of testing by entomology scientists against termites and other pests. From 2000 to 2012, testing and field trials were performed at Texas A&M. After 2012, lab and field tests at UGA, UF, LSU, and the City of New Orleans termite lab.

### DESCRIPTION OF COMPONENTS

*TERM Flashing|Termite Barrier* is a strong, pliable, self-adhesive sheet consisting of a 4-mil high density polyethylene film bonded to 36 mils of sealant. *TERM Flashing|Termite Barrier* is formulated for low temperature application down to 30°F (-1°C).

For flashing application, available roll widths are 12" (.3m), and 18" (.45m). and 24" (.6m).

For seam and window application roll widths are 4" (.1m), 6" (0.15 m), and 9" (0.22 m). Rolls of 36" (0.9m) and 48" (1.2m) are also available. All rolls are 75' (22.9 m) long.

*TERM Flashing|Termite Barrier* is wound on a disposable treated release sheet.

*Polyguard 650 WB Water-Base Liquid Adhesive* is available where VOC concerns or limitations apply

*Polyguard 650 LT Liquid Adhesive* is a fast drying, high tack rubber-based adhesive used on horizontal and vertical surfaces at temperatures above 30°F (-1°C).

*Polyguard 650 Mastic* is asphalt mastic with a low solvent content. It is used to waterproof exposed edges of *TERM Barrier* products.

## REFERENCES

**LEED:** Here is a link to LEED v4 Documentation:

<http://www.polyguardproducts.com/wp-content/uploads/2017/11/LEED-v4-Documentation-11-13-17.pdf>



## MAINTENANCE

No maintenance should be required unless the product has been damaged by construction or by some other activity.

## SAFETY

All *Polyguard* products must be handled in a safe manner. Some products (some mastics or primers) contain solvents, and these deserve special attention to safety since their vapors are both flammable and harmful if inhaled. Read both the product label and the Safety Data Sheet (SDS) before use.

**SDS sheets:**

<https://www.polyguardproducts.com/term/wp-content/uploads/2021/10/Term-Membranes-5-4-2020.pdf>

**HPD info:**

<https://www.polyguardproducts.com/term/term-hpd/>

Call *Polyguard* at 214-515-5000 if you have questions.

The *650 LT Liquid Adhesive* is an industrial coating and would be harmful or fatal if swallowed. It is marked as red label from the standpoint of flash point.

Solvents could be irritating to the eyes, flush with water and contact physician.

Avoid prolonged contact with skin and breathing of vapor or spray mist from liquid adhesive. *In confined*

*areas, use adequate forced ventilation, fresh air masks, explosion-proof equipment, and clean clothing.*

## INSTALLATION

Here is a link to an installation video:

<https://www.youtube.com/watch?v=AFBsmawMvHo>

### Preparatory Work

Apply *TERM Barrier* only in fair weather, with temperatures above 30°F (-1°C) and rising.

If weather is cold and/or damp, making initial adhesion marginal, application of *650 LT Liquid Adhesive* will assist the initial adhesion.

### Application of Flashing Barrier

Remove sharp protrusions such as concrete, mortar, or plaster.

Make sure the surface is clean, dust free, smooth, and dry. Adhesive surface of the tape should not be in contact with any caulks or sealants containing plasticizers or solvents. This includes most silicone or polyurethane sealants.

Apply liquid adhesive to all surfaces which will receive *TERM Flashing Moisture|Termite Barrier* at 250 – 300 ft<sup>2</sup>/gallon.

Cut pieces of flashing to length as needed and apply to substrate 30- 60 minutes after liquid adhesive has been applied.

The flashing should be placed with its horizontal portion extending no closer than 1/2" from the edge of the horizontal ledge.

Remove only the first 6-12 inches of release liner and adhere the exposed adhesive face to the substrate. This will assist you with correct positioning of the flashing. Where one piece of flashing is being placed next to another, overlap the flashing 2" minimum.

If two pieces overlap vertically be sure to shingle them, with the lower piece or the piece closest to the exterior overlapped by the other. Extend flashing past the *TERM Sill Barrier* edge to ensure tie-in.

Roll flashing firmly into place with a hand roller.

Use *650 Mastic* to seal all top horizontal terminating edges on walls, pipes, and other protrusions.

### Ultraviolet Protection

TERM Flashing Barrier can be adversely affected by ultraviolet light. It should be covered as soon as possible and not left exposed to sunlight for over 30 days.



TERM Flashing|Termite Barrier is also available with aluminum foil UV resistant backing, offering up to 12 months UV resistance.

Available widths are 12" and 18".

### Inspection and Repairs

Visually inspect TERM Flashing|Termite Barrier for tears, punctures, pinholes, air blisters and "fish mouths" where water or insects could gain entry. Make repairs by removing all damaged barrier so that only well bonded barrier remains. Care should be taken to obtain good adhesion between barrier used for repairs and originally

applied barrier.

### STORAGE

Barrier and accessories should be unloaded and stored carefully. Cartons and containers must be protected from weather, sparks, flames, excessive heat, cold and lack of ventilation. DO NOT stack barrier material higher than 5' (1.5m) vertically, nor double stack pallets. Cartons should be stored on pallets and covered to prevent water damage. For best results, barrier should be stored 50-75°F prior to application.

### HEALTH AND SAFETY

All Polyguard Products Safety Data Sheets (SDS) and precautionary labels should be read and understood by all user supervisory personnel and employees before using. Purchaser is responsible for complying with all applicable federal, state or local laws and regulations covering use, health, safety, and disposal of the product.

### TECHNICAL SERVICES & SALES

**Polyguard Products, Inc**

PO Box 755  
Ennis, Texas 75120

Phone: 214-515-5000

Email: [polyguard@polyguard.com](mailto:polyguard@polyguard.com)

Website: [www.polyguard.com](http://www.polyguard.com)

### PACKAGING INFORMATION

PRODUCT	UNIT OF MEASURE	APPROXIMATE COVERAGE	LB/UNIT	PALLETIZATION
6" x 75' - 6 rolls (450 lf) 9" x 75' - 4 rolls (300 lf) 12" x 75' - 3 rolls (225 lf) 18" x 75' - 2 rolls (150 lf) 36" x 75' - 1 roll (75 lf)	Carton	225 ft <sup>2</sup>	57 lb.	36 cartons
Polyguard 650 WB Water Base Liquid Adhesive	5-Gal Pail or 4-1-Gal Pail	250 - 350 ft <sup>2</sup> /gallon	50 lb. 37 lb.	36 Pails 54 Cartons
Polyguard 650 LT Liquid Adhesive	5-Gal Pail or 4-1-Gal Pail	250 - 350 ft <sup>2</sup> /gallon	45 lb. 31 lb.	36 Pails 54 Cartons
Polyguard 650 Mastic	5-Gal Pail or Ctn. with 12 30 oz. tubes	½" bead 65 LF/tube 1" bead 100 LF/gallon	48 lb./Pail	36 Pails 25 Cartons

### PHYSICAL PROPERTIES

PROPERTY	ASTM METHOD	RESULTS (ENGLISH)	RESULTS (METRIC)
Color	--	Red and white	Red and white
Barrier Thickness	ASTM D 1000 inch (mm)	.040	.040
Long Term Testing against Termite Penetration	ICC AC 380 Acceptance Criteria for Termite Physical Barriers	ICC AC 380 compliance <a href="#">ICC ESR-3632</a>	ICC AC 380 compliance <a href="#">ICC ESR-3632</a>
Elongation of Barrier Sealant - Percent Stretch Before Failure	ASTM D 412	> 1000%	> 1000%

The information contained in this document is based on data and knowledge considered to be true and accurate at time of printing and is offered for the users' consideration, investigation, and verification. Polyguard Products Inc. cannot be held liable for errors made as a result of information herein. Changes and modifications can be made to this document without prior notice. No statement, recommendation or suggestion is intended for use which infringe on patents or copyrights held by Polyguard Products, Inc.

Pesticide Repellency ( <i>Chlordane, fipronil, permethrin</i> )	ASTM F 2130	0%	0%
Permeance to Moisture and Water Vapor	ASTM E 96-B Grains/ft <sup>2</sup> /hr./in HGF ( <i>grains/hr./m<sup>2</sup></i> )	.035	.023
Water Absorption	ASTM D 570	0.1%	0.1%
Tensile Strength – Film Backing	ASTM D 882 PSI / ( <i>N/mm<sup>2</sup></i> )	5470	37.72
Tensile Strength – Barrier Composite	ASTM D 412 (Modified Die C) PSI / ( <i>N/mm<sup>2</sup></i> )	325	2.24
Peel Adhesion	ASTM D 903 lb./in width / ( <i>N/mm</i> )	12.1	2.17
Overlap Bond	ASTM D 1876 lb./in width / ( <i>N/mm</i> )	8.0	1.4
Low Temperature Flexibility	ASTM D 146 180° bend over 1" mandrel at -25°F(-32°C)	No cracking or delamination	No cracking or delamination
Barrier Puncture Resistance	ASTM E 154 (Blunt Instrument) lb. / ( <i>N</i> )	50	182
Resistance to Hydrostatic Head	ASTM D 5385Ft / <i>M</i>	231	70.4
* Please refer to testing at this web address: <a href="http://www.polyguardproducts.com/term/techref.htm">www.polyguardproducts.com/term/techref.htm</a>			

## LIMITATIONS

### **The TERM Flashing Water/Termite Barrier is just one piece of an extensive termite barrier system**

When properly installed, TERM Barrier products will physically block termites from entering the structure at the protected area but will not block termites from entering at other points on the structure. Installing more TERM components blocks more termite entry points, but does not guarantee protection in areas the TERM products are not applied

<https://www.polyguardproducts.com/term/exclusion-101/how-pests-enter-structures/>

If you look at the termite web link above, you will see some of the many places on a structure where termites can enter.

Polyguard's TERM Division has developed products and applications to exclude termites at most entry points, but not all of them. We have in development barriers for additional entry points. Each correctly installed TERM barrier component adds to the probability that the structure will have less termite problems and will require less chemical treatment to treat termite infestations.

Polyguard's TERM Barrier has been extensively tested, both in the laboratory and in long term field trials at multiple sites, against *Reticulitermes flavipes* and *Coptotermes formosanus* subterranean termites, which can be said to be the most voracious insects in the United States measured in terms of property damage. Polyguard's TERM Barrier System products are part of an Integrated Pest Management (IPM) program and where local regulations require, may be used to supplement termiticide applications.

There are numerous other termite species, not known to be present in the United States, which are equally or more voracious than the U.S. species which were tested. Limited testing outside of the United States has been done or is in progress. Contact Polyguard for up-to-date information about non-domestic testing.

The information in this data sheet is designed to be helpful to the reader. It is based on experience and information considered to be accurate and true. Readers should carefully consider and verify the information with investigation of any areas with uncertainty. Polyguard does not warrant the results to be obtained. Additionally, please read everything here in conjunction with Polyguard's conditions of sale, which are applicable to everything supplied by us. No statement here is intended for any use which would infringe any patent or copyright.

Purchaser is responsible for complying with all applicable federal, state, or local laws and regulations covering use of the product including waste disposal.